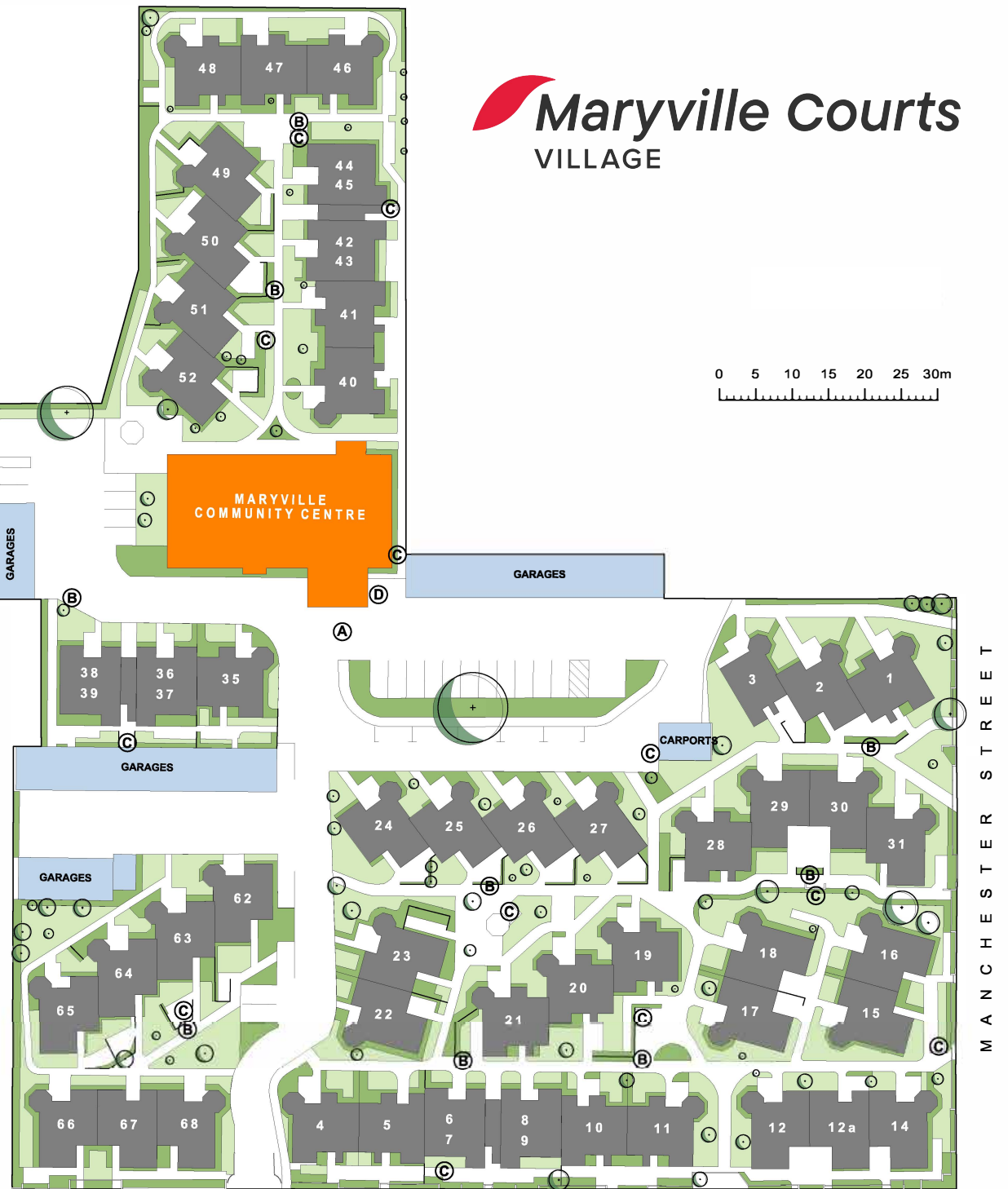


Maryville Courts VILLAGE

0 5 10 15 20 25 30m

COLOMBO STREET



MANCHESTER STREET

MAIN ENTRY at 155 SALISBURY STREET

SALISBURY STREET

Archer
Villages & Care Homes

- MARYVILLE COMMUNITY CENTRE
- MARYVILLE COURTS VILLAGE
- ACCESSORY FACILITIES

- A EMERGENCY CONGREGATION AREA
- B LETTERBOXES
- C RECYCLING/ RUBBISH BINS
- D RECEPTION / OFFICE AREA



SAMPLE PLAN

0 1 2 3 4 5m

VILLA 1. Double bedroom

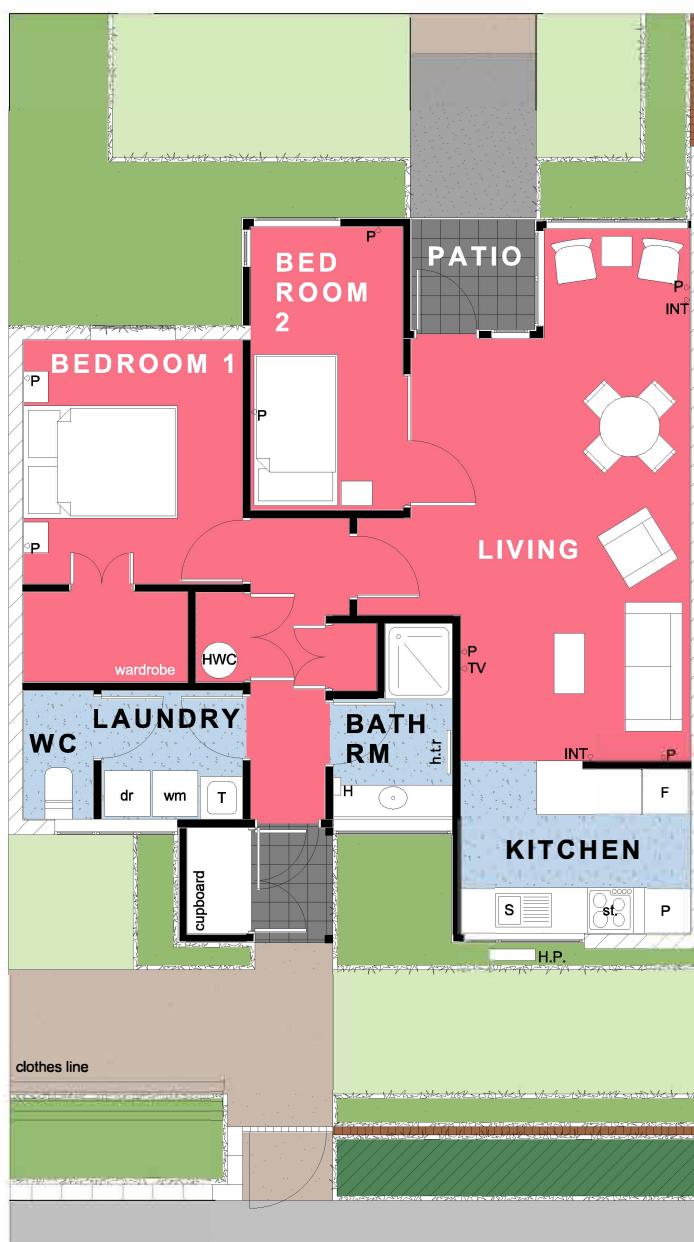
Net Floor Area - 68m²

ROOM LIST

LIVING/ DINING	3.7 x 5.6m
SUN ROOM	2.8 x 2.8m
KITCHEN	3.0 x 2.3m
BATHROOM	1.6 x 1.6m
LAUNDRY	3.7 x 1.7m
WC	0.9 x 1.7m
MASTER BEDROOM	2.9 x 3.2m
SECOND BEDROOM	2.0 x 3.7m

FEATURES

- Well appointed kitchen with electric hob, oven, range hood and vinyl floor coverings
- Open plan dining and living areas, with carpet floor coverings and heatpump
- Bathroom with vanity, shower, heater, heated towel rail and vinyl floor coverings. Seperate toilet off laundry
- Main bedroom to accomodate queen bed, with large built in wardrobe. Smaller guest bedroom.
- Curtains throughout, kitchen blinds
- Patio with garden outlook and clothesline



SAMPLE PLAN

VILLA 5. Double bedroom

Net Floor Area - 66m²

ROOM LIST

LIVING/ DINING	3.7 x 5.6m
SUN NOOK	1.9 x 1.4m
KITCHEN	3.0 x 2.3m
BATHROOM	1.6 x 1.6m
LAUNDRY	3.7 x 1.7m
WC	0.9 x 1.7m
MASTER BEDROOM	2.9 x 3.2m
SECOND BEDROOM	2.0 x 3.7m

FEATURES

Well appointed kitchen with electric hob, oven, range hood and vinyl floor coverings

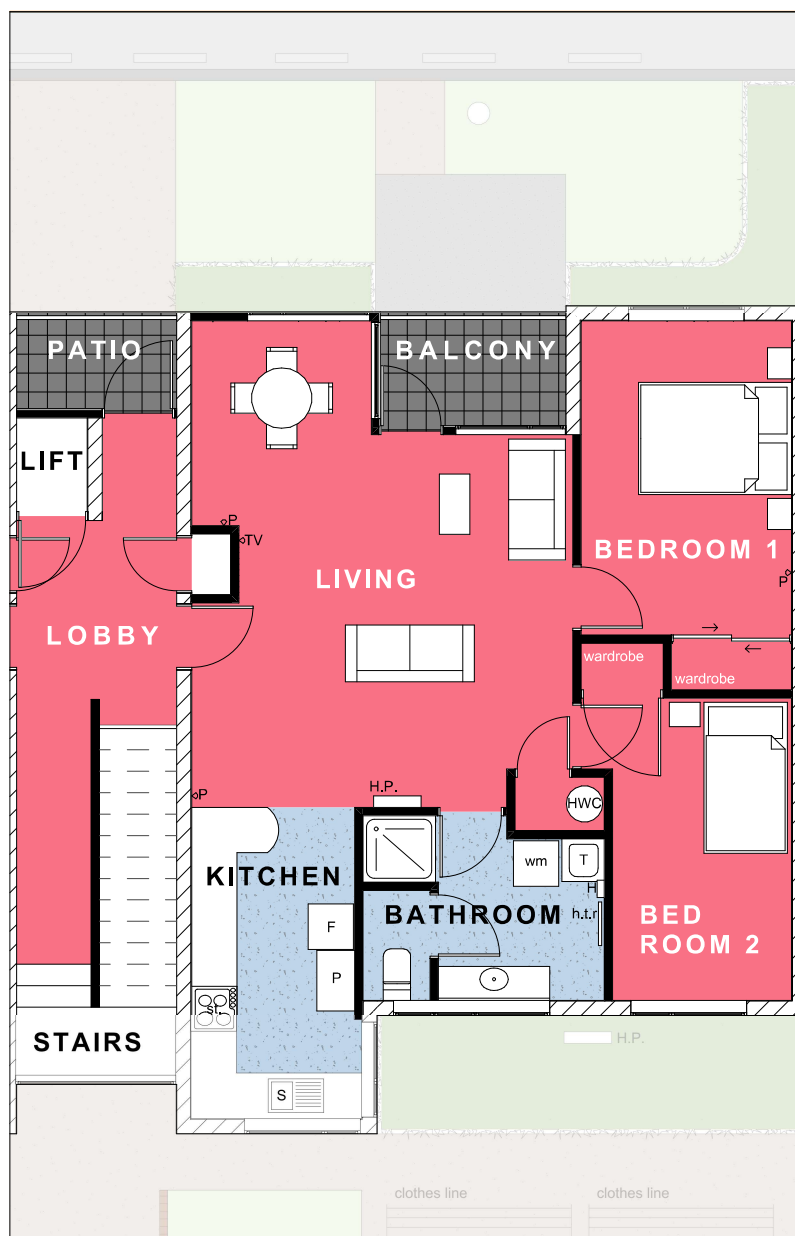
Open plan dining and living areas, with carpet floor coverings and heatpump

Bathroom with vanity, shower, heater, heated towel rail and vinyl floor coverings. Seperate toilet off laundry

Main bedroom to accomodate queen bed, with large built in wardrobe. Smaller guest bedroom.

Curtains throughout, kitchen blinds

Patio with garden outlook and clothesline



SAMPLE PLAN

VILLA 37. Double bedroom

Net Floor Area - 70m²

ROOM LIST

LIVING/ DINING	3.7 x 5.6m
KITCHEN	3.0 x 2.3m
BATHROOM	1.6 x 1.6m
LAUNDRY	3.7 x 1.7m
WC	0.9 x 1.7m
MASTER BEDROOM	2.8 x 4.1m
SECOND BEDROOM	2.4 x 3.9m

FEATURES

- Well appointed kitchen with electric hob, oven, range hood and vinyl floor coverings
- Open plan dining and living areas, with carpet floor coverings and heatpump
- Bathroom with vanity, shower, heater, heated towel rail and vinyl floor coverings. Seperate toilet off laundry
- Main bedroom to accomodate queen bed, single guest bedroom, both with built in wardrobes
- Curtains throughout, kitchen blinds
- Access via lobby; stairs or lift
- Patio with garden outlook and clothesline