

THE
AVENUES

metlifecare



Small, social and close to it all

Experience retirement living in the heart of Tauranga, with Memorial Park right on your doorstep and popular shops and eateries within walking distance. Enjoy beautifully designed apartments, perfect for both comfort and entertaining.

Village facilities include a heated indoor pool, library, theatrette, and pétanque

Sweeping views and manicured grounds

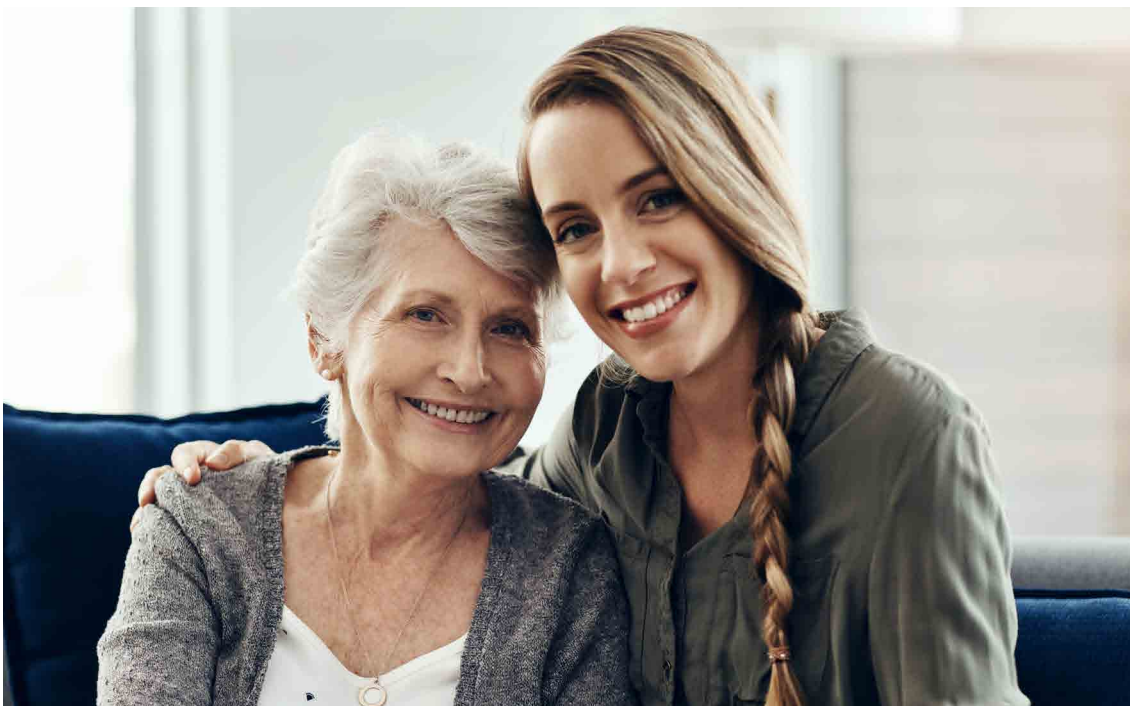
Pet friendly

Rest home and hospital level care (subject to availability)



Free to be yourself

Our friendly team are committed to helping you live your best retirement. The Avenues combines quality facilities, a vibrant community, and sweeping views within beautifully manicured grounds.



Here, you're free to be yourself. Choose to entertain friends at home, or embrace lively village life.

The Avenues has all you need to live an enriching lifestyle, with superior quality facilities catering to regular exercise, restorative relaxation, and social interaction.



Facilities

Gym

Spa pool

Heated indoor pool

Art gallery

Theatre

Library

Grand piano

Indoor bowls

Billiards room

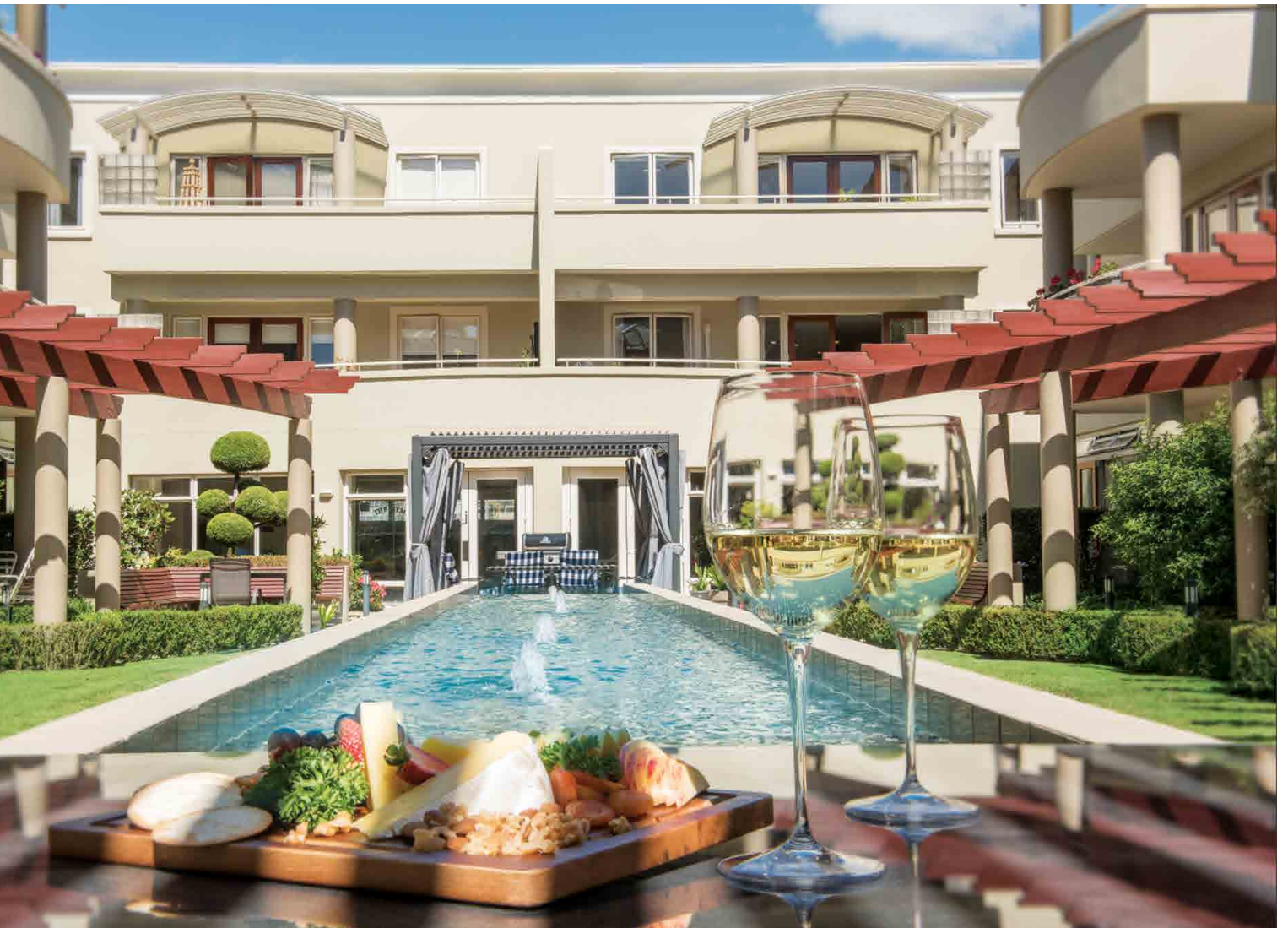
Lounges

Events, groups, and classes

Guest suite for family

Secure car parking
and storage





“I feel genuinely safe and connected here. A real bonus is the village’s location - super handy to local shops and medical services.”

The Avenues resident

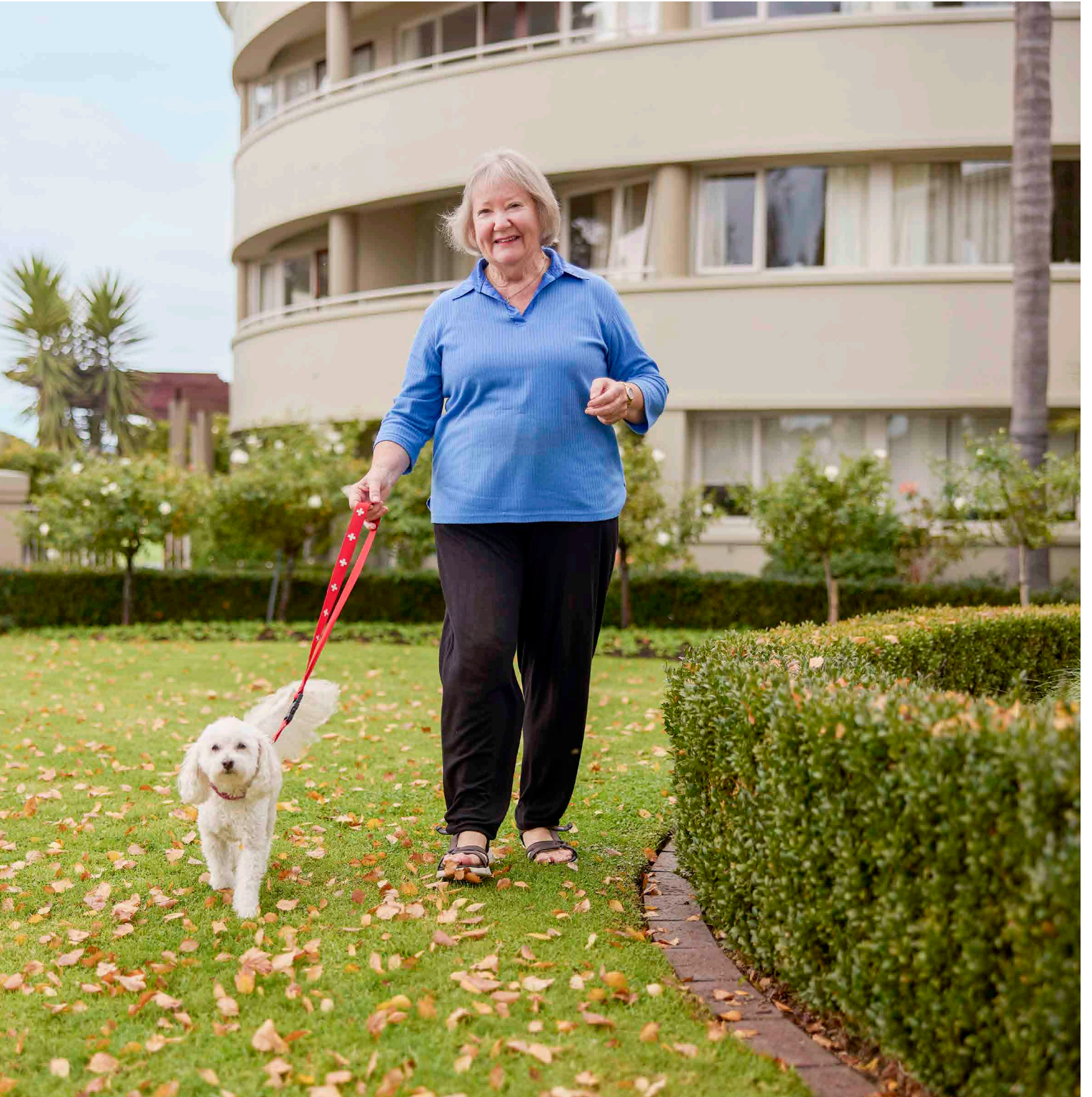


The Avenues – Facilities

“Everyone is so warm and welcoming – from residents to staff. Our village is just the right size (not too big, not too small), and we’re also pet friendly!”

The Avenues resident

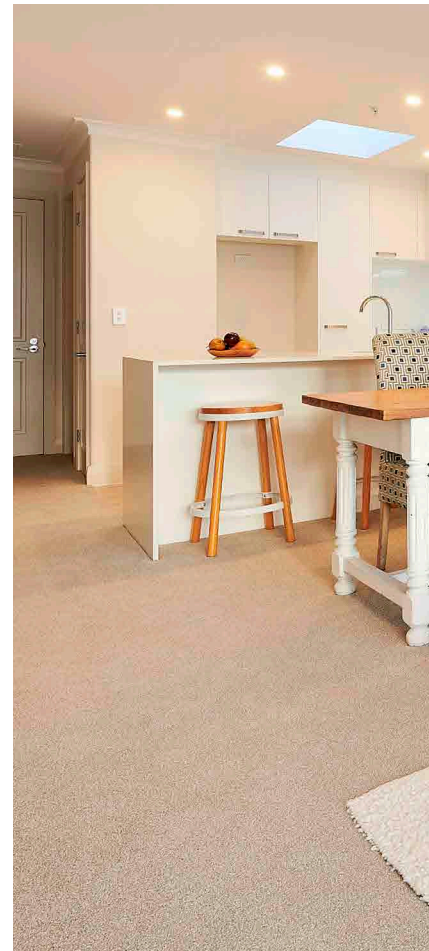




The Avenues – Living options

Find your perfect fit

We offer independent living in spacious open-plan apartments with quality finishes and 24/7 care in our care home and care suites (subject to availability).



Independent living

One, two or three-bedroom apartments

Airy and spacious open plan living

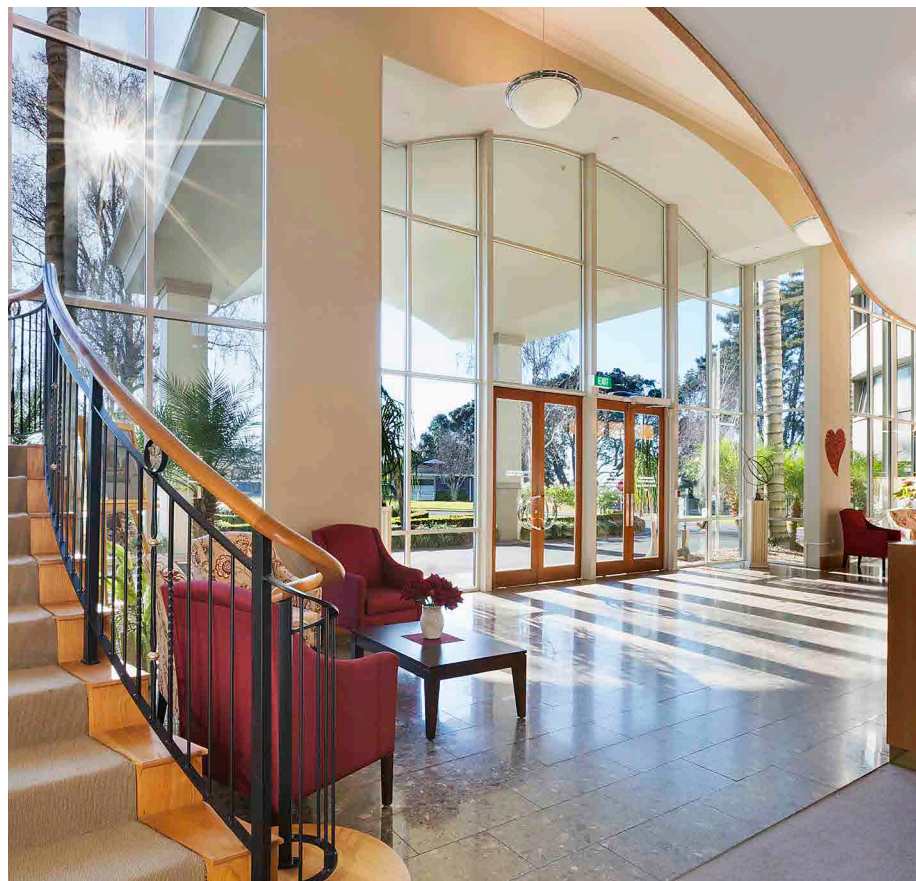
Spacious balconies, sweeping views

Quality appliances and fittings

Walking distance to village facilities

Secure parking and storage

24-hour emergency call buttons



Homes are available under an Occupation Right Agreement secured by a first ranking mortgage in favour of the statutory supervisor on behalf of the residents.



Our care service promise. People come first, always

Care at Metlifecare is deeply personal, and always personalised. When you move into our care home, we'll develop an individual care plan with you to understand your preferences and help you to continue doing the things you love. Each person will be supported to live their best life in a safe, welcoming and home-like setting.

From social activities to dining experiences, outings, and hobbies, you'll have plenty of opportunities to connect with like-minded souls who share your passions.

Care options

The Avenues offers rest home and hospital level care. You'll need an assessment to determine which level of care is right for you. While we can't always guarantee availability, we encourage you to get in touch - we are here to help.

Care home

We provide 24/7 premium level care. Our highly trained caregivers and registered nurses are committed to the comfort and wellbeing of our residents, without compromise.

Our promise

Kind, considered,
and respectful care

Every resident is
known personally

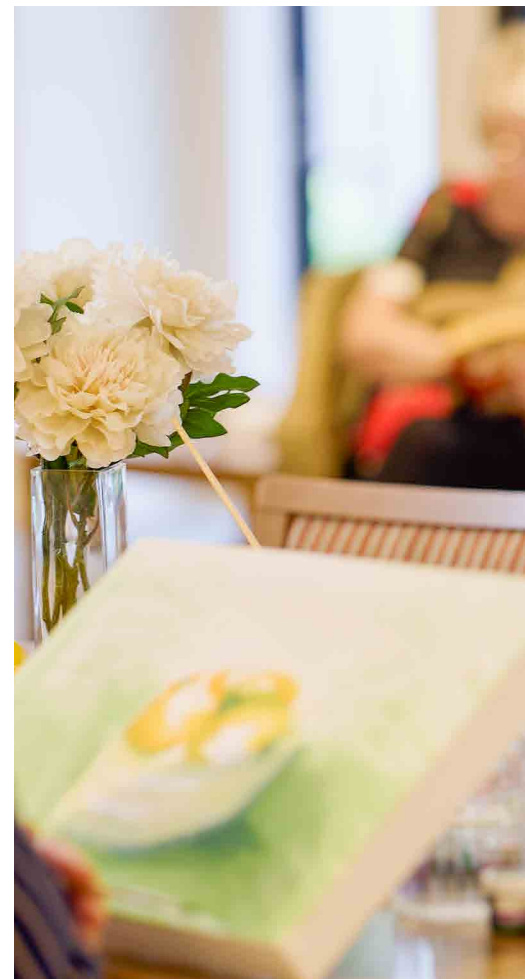
Care plan tailored
to individual needs

Interests and hobbies
are supported

High-quality facilities
and social activities

Family involved in
decision-making

Local doctors visit
weekly and as needed



“The people we look after have so much knowledge to share, and so much to offer – I never tire of listening to their stories.”

Vicki, passionate Care Services Manager at Metlifecare



Our care levels

1 Rest home care

When you need 24/7 support

2 Hospital level care

High level of care including palliative and end-of-life care

Three key steps for the life you want to live

It's a big step, retirement living. And it looks different for everyone. Which is why we're here. To support you to live your best retirement and best life. Metlifecare villages are homes and communities, uniquely moulded by the residents who choose to live there. **To help you choose, we've compiled three essential steps.**

1

Step 1 Find your fit

Every Metlifecare village is unique. That's how we offer the perfect fit for so many lifestyles. Freedom, social connection, and premium facilities combine to create an environment that says, **welcome home.**

2

Step 2 Understand the numbers

Understand the costs involved

Understand what you get in return

- Occupation Right Agreement
- No-surprise Deferred Management Fee (also called our 'Membership Fee')
- 12-month repayment timeframe. We will pay the refund to you when a new resident moves into your unit, or within 12 months - whichever comes first
- No unexpected charges when you leave
- 90-day money-back guarantee (some conditions apply)

Your additional care options

3

Step 3 Seek independent legal advice

It's important to seek legal advice before signing an Occupation Right Agreement. Contracts and legal implications vary between villages. And buying a home in a retirement village is different from buying a residential house or apartment. You can get started by speaking with a lawyer experienced in this area.

Frequently asked questions

Can my friends and family stay with me?

Yes, of course. This is your home. Here, you're free to be yourself and live the life you choose. Family and friends are invited to stay for a total of 90 days per year. But if they need to stay longer, have a chat with your friendly village manager.

Can I redecorate my home with new wall or floor coverings?

You are welcome to change your home to suit your individual taste, at your own cost. We want you to feel at home every time you walk through the door. Chat with your village manager about how to get started.

I'm a little confused by costs. How does it all work?

We're transparent about our costs and want you to feel confident when choosing your Metlifecare village. Visit [metlifecare.co.nz/guides](https://www.metlifecare.co.nz/guides) for more information or chat with our friendly team for a cost breakdown. We're here to answer any questions you have at **0800 909 303** [metlifecare.co.nz/contact](https://www.metlifecare.co.nz/contact)

What if I want to find out more about care?

Our care plans are tailored to your individual needs. We accept both government subsidies and privately funded residents. To find out more about our care options, visit [metlifecare.co.nz/aged-care](https://www.metlifecare.co.nz/aged-care)

What happens if I have an accident or get sick?

Every Metlifecare village home is equipped with emergency call buttons for immediate attention.

Who pays for council rates, water rates etc?

Our village fee covers a range of costs including council rates, water rates, building insurance, maintenance, community facility upkeep, gardening, village staffing and operations.

What isn't included in the village fee?

Your phone, internet, personal contents insurance and electricity are your personal choice and are paid by you, directly to the provider.

What if I want to go on holiday?

We'll maintain the grounds, clear your letterbox, and manage security while you're away. We're here to help you to live the life you choose, without compromise.

Will a place in a care home be available when I need it?

One of the biggest worries retirees have is whether a care bed will be available when it's needed. Unfortunately, there is a well-documented shortage of care beds in New Zealand and, because care beds are allocated according to need and demand is difficult to predict, we can't always guarantee that a care bed will be available straight away. Metlifecare is proactively developing more care homes to extend our offering and we encourage you to contact us about your needs as early as possible. We'll do our very best to help.

The Avenues – We are Metlifecare

We are Metlifecare

Our villages are shaped by people. Happy residents living a secure life where every day is the best it can be. Our dedicated team go above and beyond to make retirement a special time. Together, we are Metlifecare.

With a family of unique retirement villages across New Zealand, we've created a place for everyone. Whether you enjoy an active social life, a busy travel itinerary, or relaxing quietly by the beach, we strive to provide the best environment for every resident. That's why our living options, from fully independent to 24/7 care, are tailored to your individual needs.

We're proud to be a trusted provider of retirement living in New Zealand since 1984. With welcoming villages, premium facilities and industry-leading care, backed by 'MetProtect'; our ten financial assurances. We put people at the heart of everything we do. If you care about it, then we care too. That's our promise.



We're here to support you

Our friendly Metlifecare team is available to answer any questions you have. Reach out to meet your dedicated sales executive.

Find a village that feels like home

Call Jamie on 07 544 7711 | jamies@metlifecare.co.nz
10 Tenth Avenue, Tauranga | metlifecare.co.nz



Why Metlifecare?

Never Stop

Metlifecare is proud to celebrate the rich lives of our residents, the bonds of friendship formed in our villages and to keep challenging the misconceptions around ageing.

In the gym, baking in the kitchen or out on the boat, in workshops, craft rooms, bustling cafés and tranquil gardens, in modern apartments and stylish villas across New Zealand, our Metlifecare residents never stop living life on their terms.

metlifecare

**Welcome home -
small, social and
close to it all.**

metlifecare

metlifecare.co.nz | 0800 909 303

APR26