

WINDSORCARE COTTAGES

COTTAGES WITH GARAGES

INDICATIVE ROOM SIZES

LIVING	3900mm x 5700mm
KITCHEN	2600mm x 3500mm
FOYER	3900mm x 1900mm
BATHROOM	2400mm x 2600mm
MASTER BEDROOM	3300mm x 3900mm
BEDROOM 2	3300mm x 3100mm
GARAGE	3500mm x 5900mm

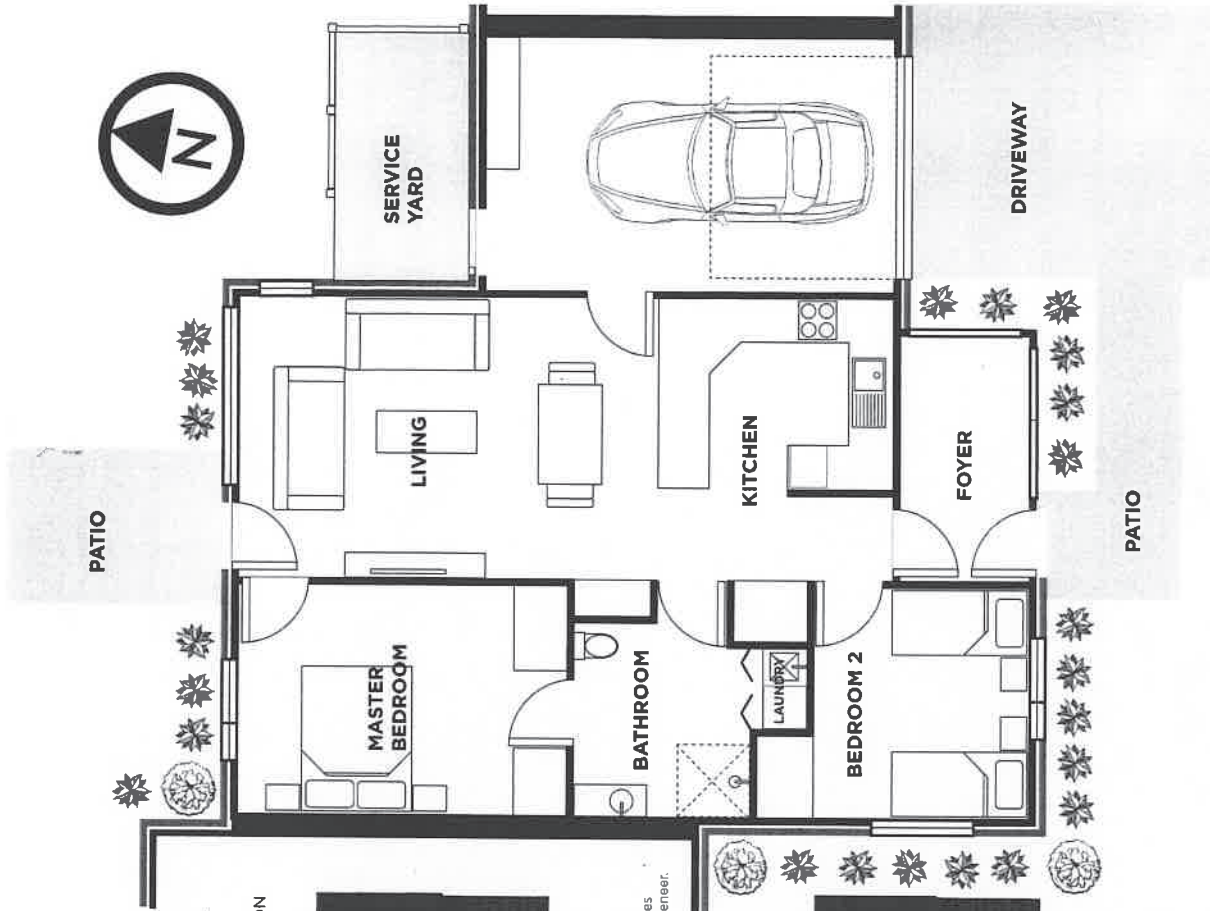
TOTAL FLOOR AREA
100 - 110sqm

SPECIFICATION FOR EACH COTTAGE

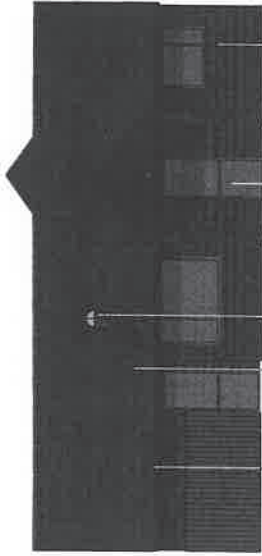
- Corrugated roofing
- Brick veneer external walls
- Double glazed aluminium windows and doors
- Wheelchair accessible
- Insulated concrete floor
- Private service yard
- Insulated walls [R2.6] and ceiling [R3.6]
- Painted plasterboard walls and ceilings
- Vinyl floor coverings in kitchens and bathrooms
- Carpet in living and bedrooms
- Painted flush panel internal doors
- Level entry shower
- Mirror with demister and heater towel rail in bathroom
- Sectional garage door with automatic openers
- Heat pump
- MATV / Nursecall / telephone to each unit

APPLIANCES

- Wall oven
- Ceramic hob
- Single drawer dishwasher
- Fridge/freezer
- Microwave
- Food waste disposer
- Washing machine
- Clothes dryer

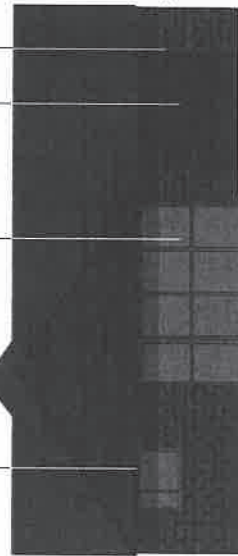


NORTHERN ELEVATION



- Steel fascia/gutter system,
- Steel corrugated roofing
- 400mm solar tube skylight
- Powdercoated aluminium joinery with double glazing, Security screen to entry doors.
- Steel sectional garage door
- 70 series brick veneer.

SOUTHERN ELEVATION



* Please note not all cottages have the same specifications. This is an example only. Some cottages do not have garages

WINDSORCARE

Since 1959

60
Years
WINDSORCARE



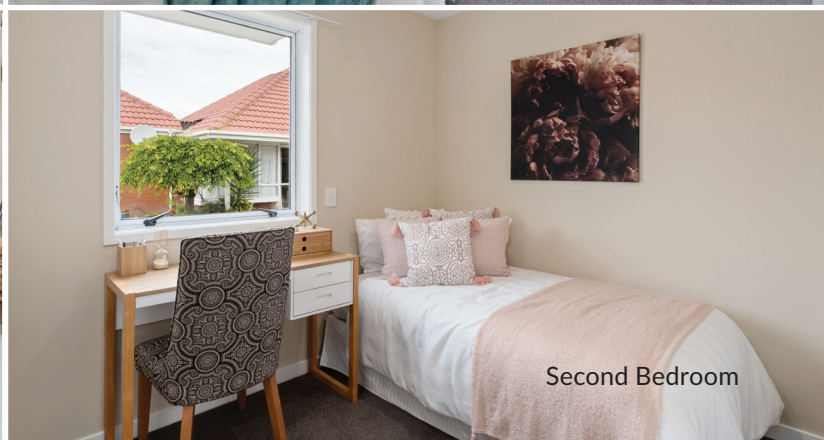
Kitchen



Master Bedroom



Open plan living/dining



Second Bedroom