

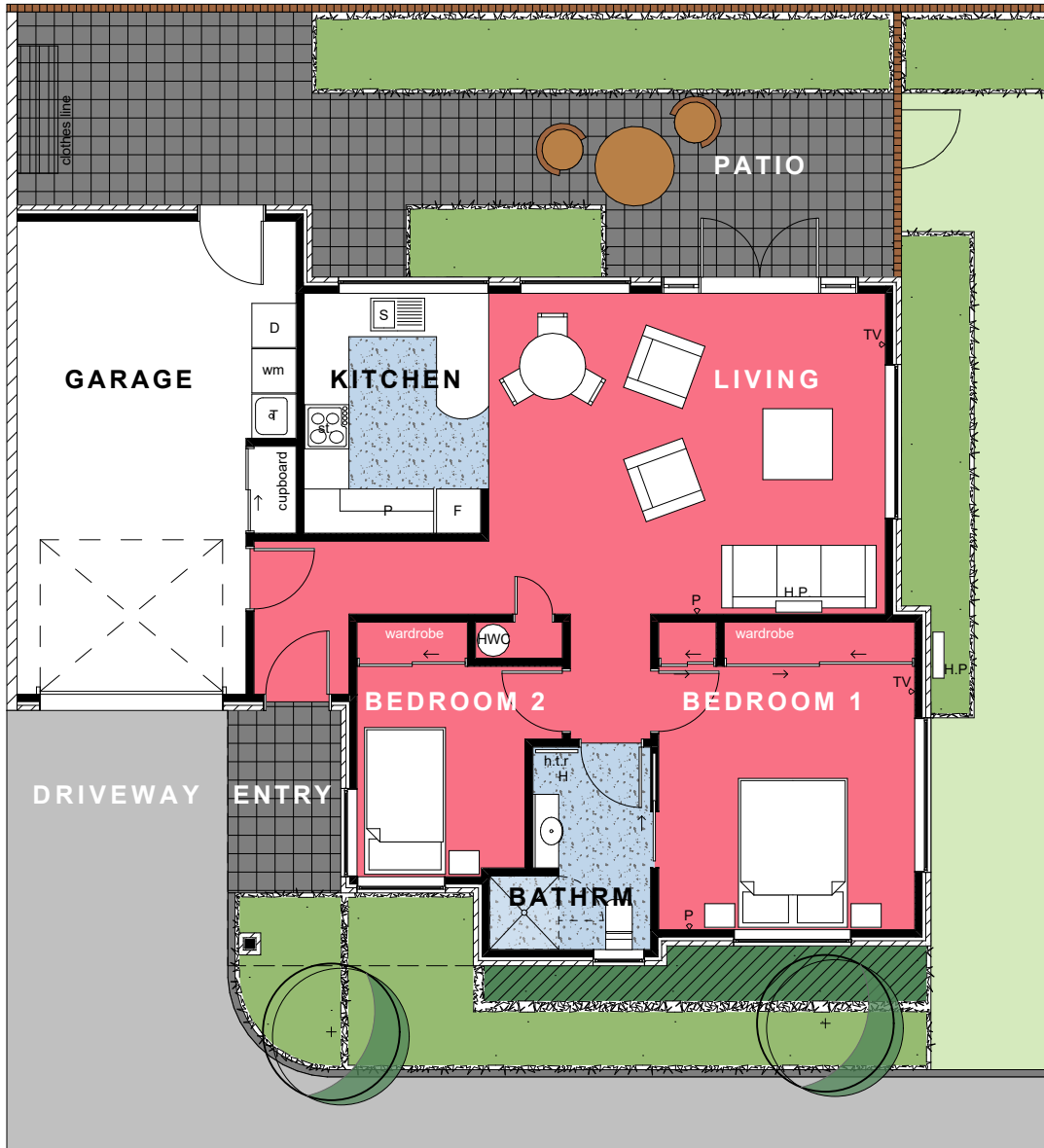
Beckenham

VILLAGE & HOME



- ARCHER HOME
- ARCHER LEISURE CENTRE
- ARCHER VILLAGE
- ARCHER ACCESSORY FACILITIES

- (A)** EMERGENCY CONGREGATION AREA
- (B)** LETTERBOXES
- (C)** RECYCLING/ RUBBISH BINS
- (D)** VISITOR PARKING
- (E)** RECEPTION/ OFFICE AREA



Two Bedroom with Garage

Net Floor Area - 92m²

ROOM LIST

LIVING/ DINING	5.4 x 4.4m
KITCHEN	2.5 x 3.3m
BATHROOM	1.6 x 2.7m
MASTER BEDROOM	3.5 x 3.6m
SECOND BEDROOM	2.3 x 2.9m
GARAGE	3.1 x 6.4m

FEATURES

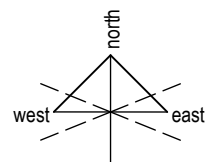
Well appointed kitchen with electric ceramic hob, range hood, dish drawer, and vinyl floor coverings

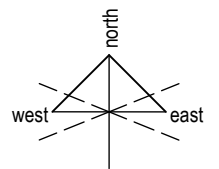
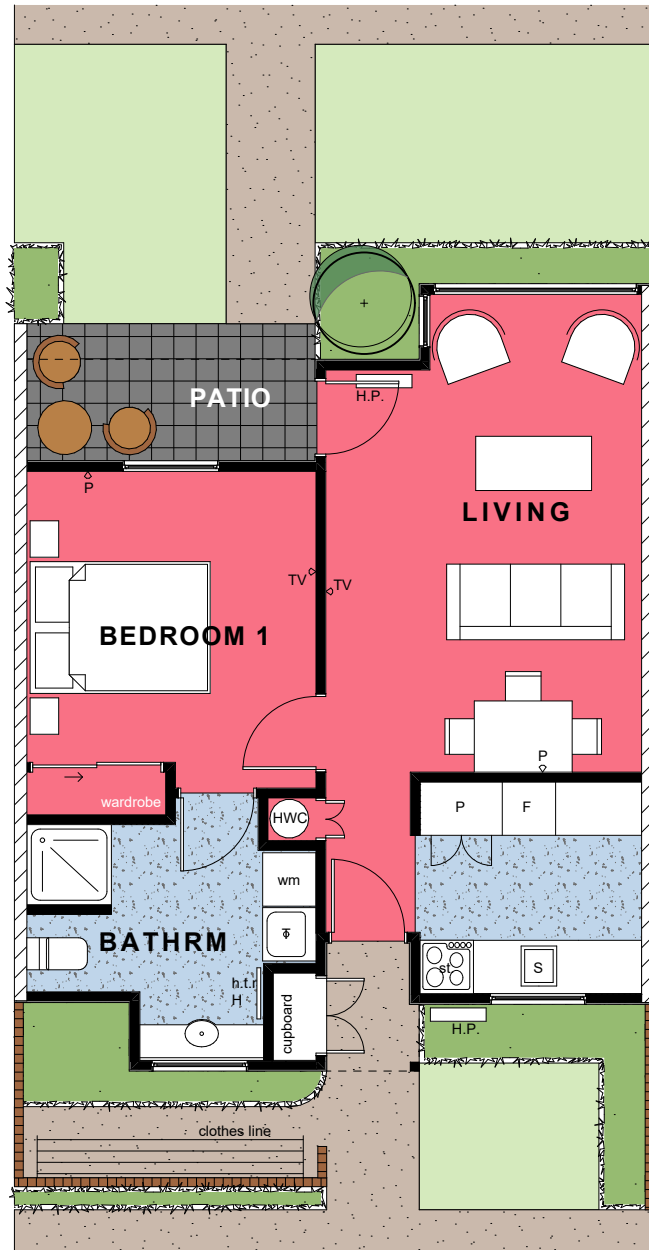
Open plan dining and living areas, with carpet floor coverings and heatpump

Single garage with automatic garage door and integrated laundry facilities with external access to clothesline

Bathroom with toilet, vanity and level access shower, heater, heated towel rail and vinyl floor coverings.

Net curtains throughout, kitchen blinds





Net Floor Area - 47m

ROOM LIST	
LIVING/ DINING	3.5 x 4.5m
KITCHEN	2.5 x 2.4m
BATHROOM/LAUNDRY	3.3 x 2.7m
BEDROOM	3.3 x 3.3m

- FEATURES**
- Well appointed kitchen with electric ceramic hob, range hood and vinyl floor coverings
 - Open plan dining and living areas, with carpet floor coverings and heatpump
 - Bathroom with toilet, vanity, shower, heated towel rail and vinyl floor coverings. Integrated laundry facilities
 - Net curtains throughout, kitchen blinds
 - Patio with garden outlook and rear clothesline