



**Our community for
over-65 living offers
a truly fresh approach.**



ARVIDA

Waimea Plains

An Arvida Living Well Community



A marvellous life by design

The latest thinking about over-65 living has been channelled into Waimea Plains, an Arvida Living Well Community that has raised the benchmark for retirement living in the Nelson region.

Located in Richmond, just 20 minutes' drive from Nelson and within easy reach of Mapua and Motueka, Waimea

Plains embraces new ideas that offer independent living within a socially active community environment.

Homes are built in small groups, to encourage the formation of vibrant micro-communities.

Homes are linked by pathways for cycling and walking, which extend beyond the community's borders to the surrounding recreational landscape.

Friends and family are welcome to visit Waimea Plains, but communities like ours can be more vulnerable, so please be mindful of any COVID-19 restrictions.



Cycle shop and resident-run brewery is a favourite spot to meet.

Do more of what you love

The Clubhouse

The theme for Waimea Plains is living well. You'll see it expressed in the architecturally-designed villas and townhouses, as well as the stunning clubhouse, which includes a

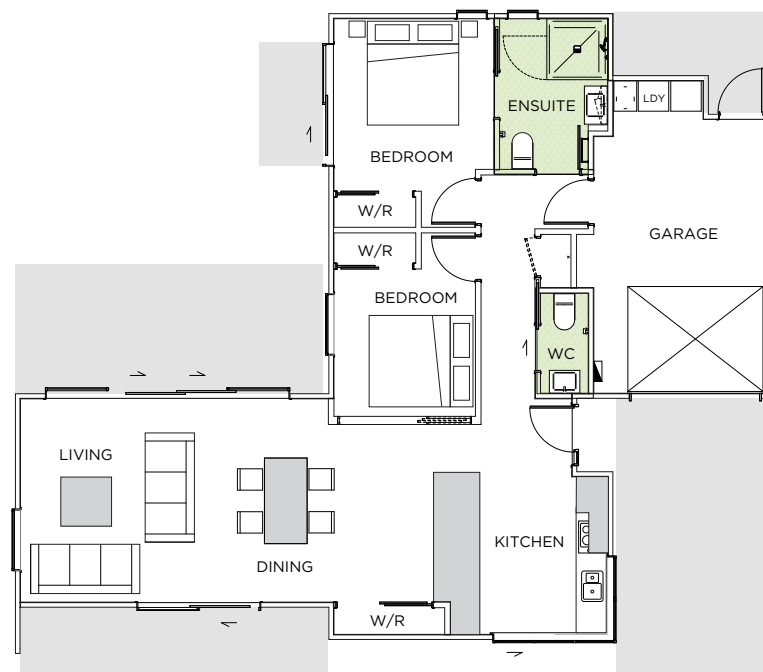
kitchen, bar, TV lounge, piano and library. Outside there's a big deck for alfresco dining and a full-size bowling green.

Socially fit for life!

The clubhouse complements the bike trails and shared gardens that make this over-65 community stand out from the crowd. Residents love the communal vegetable gardens, village green and workshop.

Arvida Good Friends

Once complete, there will be an Arvida Good Friends Living Well Centre with gym, pool, café and allied health professionals open to the public and residents. All residents will be offered a complimentary membership to Arvida Good Friends which will give you discounts for events at the centre, café, wellness facilities and much more.



Villas

We have a range of two and three-bedroom villas that are light and bright with open-plan kitchen, dining and living areas opening to outdoor patios and lawns. All homes have an ensuite bathroom and separate toilet or second full bathroom, built-in wardrobes, laundry and internal access garage.

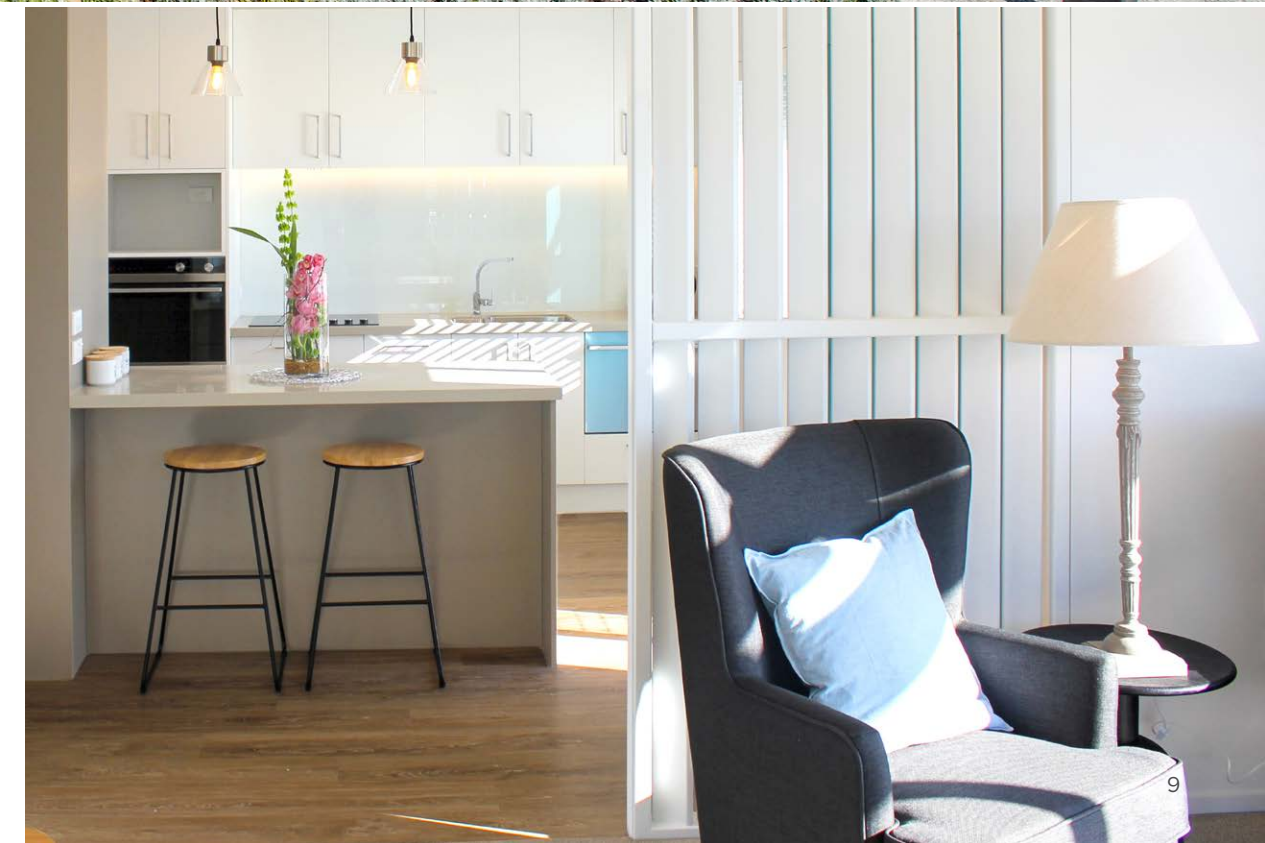
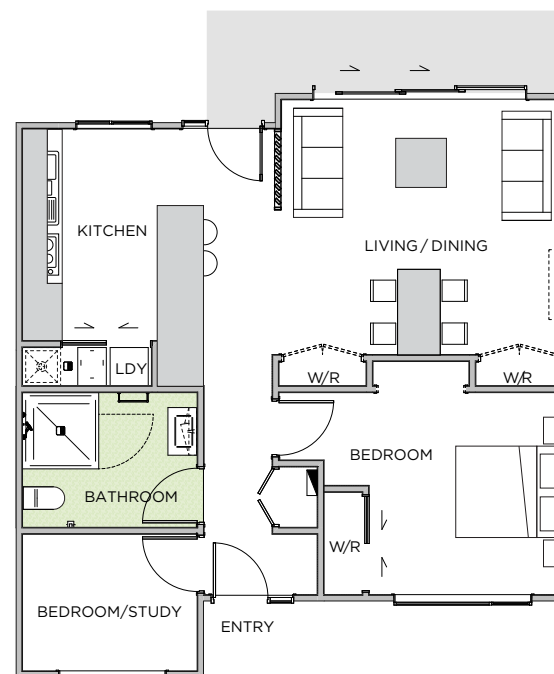
Floorplan: Example 2-bedroom villa.



Townhouses

Perfect for singles or couples, our one-bedroom plus study townhouse design is beautifully put together. Positioned to capture the sun, the kitchen is light and bright with a great breakfast bar - and the open-plan living space with full-height windows opens directly onto the patio. The master bedroom is a generous size and the study fits a bed for visitors. A modern bathroom and laundry rounds out this little gem.

Floorplan: Example 1-bedroom + study.





Weekly fee - fixed for life

At Arvida, your weekly fee is fixed for life - because we want to give you certainty and understanding around your weekly costs. This won't change from the day you move into your independent villa or townhouse.

Compare your current monthly living expenses with the costs of living in our community. You may be quite surprised at how much you are paying in your existing home.

Your weekly fee contributes to:

- Rates and water
- Rubbish and recycling
- Gardens and lawn mowing
- 24hr Tunstall emergency call system
- Regular van trips for shopping etc.*
- Activities and some social events
- Use of all common facilities such as pool, spa and gym once completed

- Provision, maintenance and insurance of common areas
- Community management costs.

The weekly fee does not include:

- Electricity
- Internet and telephone
- Sky and other tv subscriptions
- Contents insurance.

Arvida communities are designed to transform the ageing experience by helping people to feel younger for longer and being actively engaged with life. We provide services of value to all residents living here and welcome their families and friends to join us and share the community facilities.

** A small charge may apply to some longer trips.*



"You know exactly what you're paying for the rest of your life...so that gives you peace of mind."



Common questions...

Can I have my pets with me?

Yes, we know that pets are important and are often a much loved part of the family. You can have a pet - talk to our manager to confirm that your pet is suitable.

Is there security at night?

Our community has auto-locking gates and there is a security patrol twice a night. Each home is also equipped with an emergency call system.

Is there space for my car?

Yes, all of our villas have garages. Townhouses have a designated covered or uncovered car park.

Can family and friends stay with me?

Yes of course, your family and friends are welcome to stay in your villa or townhouse any time while they are visiting.

What happens when I leave?

We do our best to support you and your family in every way we can. Your weekly fee stops immediately after you leave, and we begin the refurbishment, marketing and sale of your ORA.



Designed around the landscape

The community has been designed to fit around the natural topography, maximising

the site's environment and creating wonderful private and shared spaces. Homes are grouped in small clusters; generating warm, social and vibrant micro communities connected by a series of informal pedestrian pathways.

This is an indication of development plans at Waimea Plains and is current as at March 2022. Please note it is subject to change at the discretion of Arvida.



1. There will be a café and salon open to the public.



2. Arvida Good Friends Living Well Centre with gym, indoor pool, spa and visiting health professionals.



3. 2 and 3-bedroom villas with natural ambience and indoor-outdoor flow.



4. Care centre with care suites for rest home, hospital-level and dementia care.



5. Contemporary and stylish 1-bedroom plus study townhouses.



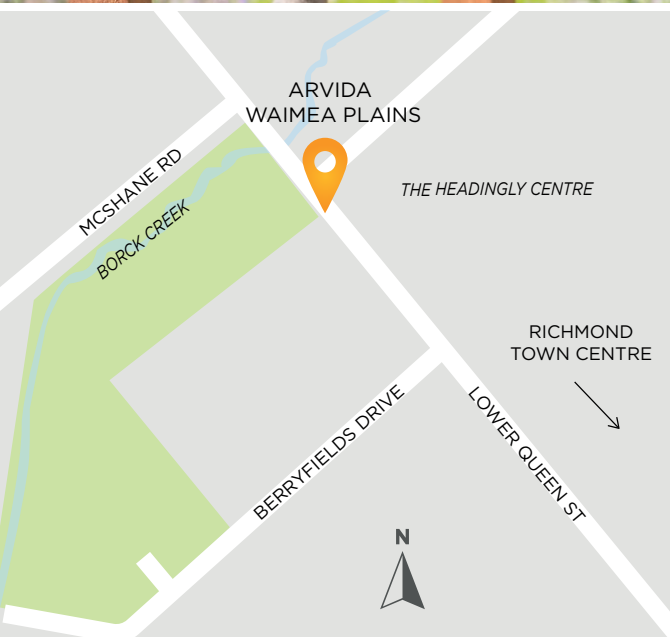
6. Resident clubhouse with social spaces, wide screen TV and bowling green.



7. Our village green will be in place until construction on our care centre gets underway.



8. Our workshop gives residents a place to tinker, create and mend.



We'd love to show you around

The best way to find out more is to come and see for yourself. We love welcoming new people, please contact our sales team on 0800 924 632 to book a time that suits, or email sales@waimeaplains.co.nz

455 Lower Queen Street, Richmond, Nelson

waimeaplains.co.nz



ARVIDA
Waimea Plains

An Arvida Living Well Community