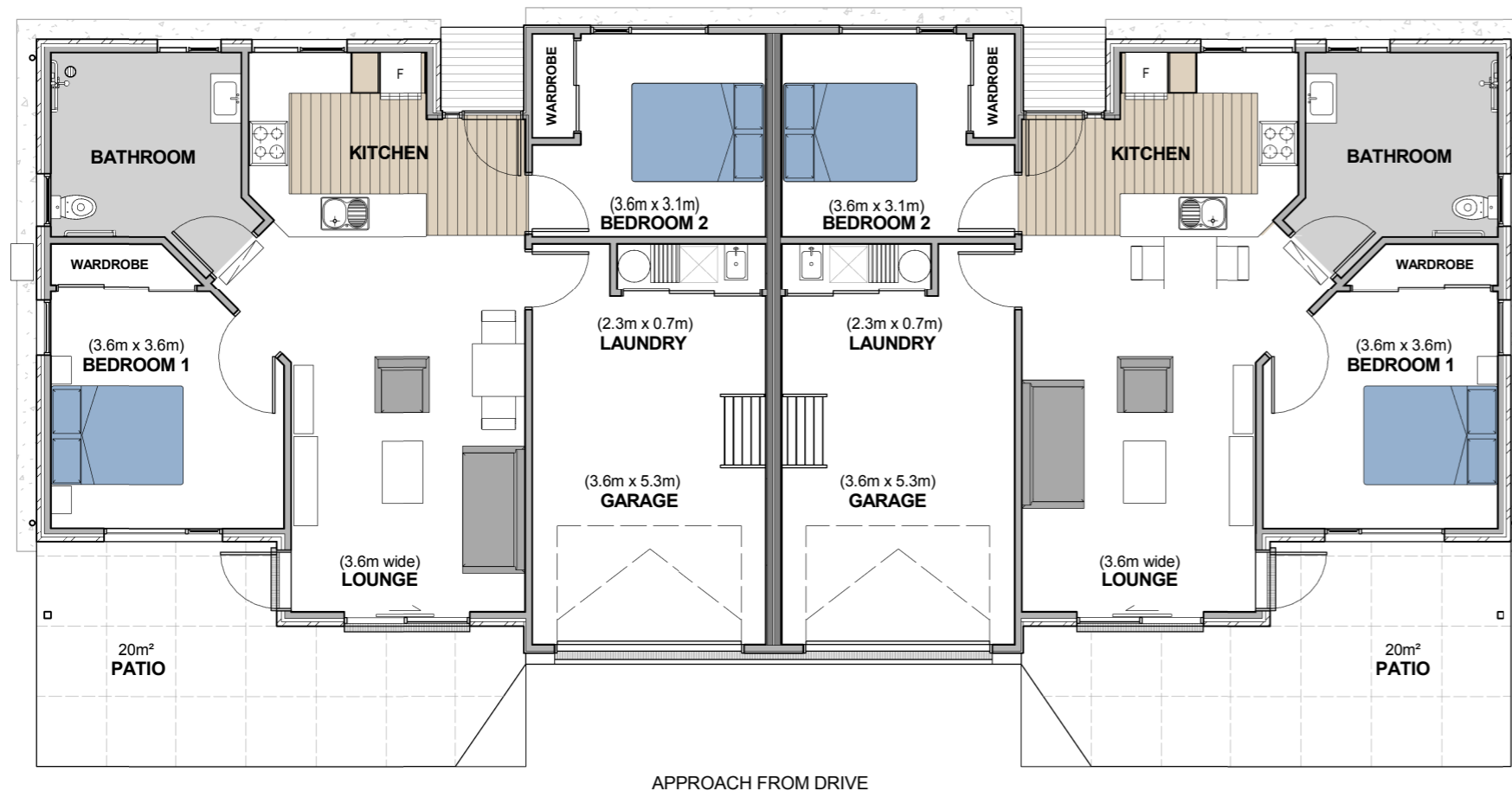


Gracelands Nikau Villa Duplex Type D with Garage

Villa size: 75m², 23m² Garage & 20m² Patio

Villa: 104



- Walk-in shower & heated towel rail
- Laundry, tub & HWC cupboard
- Open plan kitchen, dining and living room
- Concrete patio
- Rangehood and hob
- Slimline dishwasher
- Heat pump and air conditioning
- Wood grain vinyl kitchen flooring
- Anti-allergenic wool carpets in living and bedrooms
- Custom fitted kitchen joinery
- Accessible bathroom and comfortable height WC pan
- Double glazing
- High - quality facade: brickwork, weatherboards & aluminium joinery
- Internal access to carpeted garage with automatic door



OCEANIA
HEALTHCARE