



# Bupa Parkstone Retirement Village

Stage 2

Parkstone Retirement Village







# Welcome to your new home

Bupa Parkstone Retirement Village is opening 40 brand new two bedroom apartments. All our apartments come with a well-designed modern kitchen with stone bench tops, double glazed windows, heat pump/air conditioning unit and 24 hour emergency alarm system.

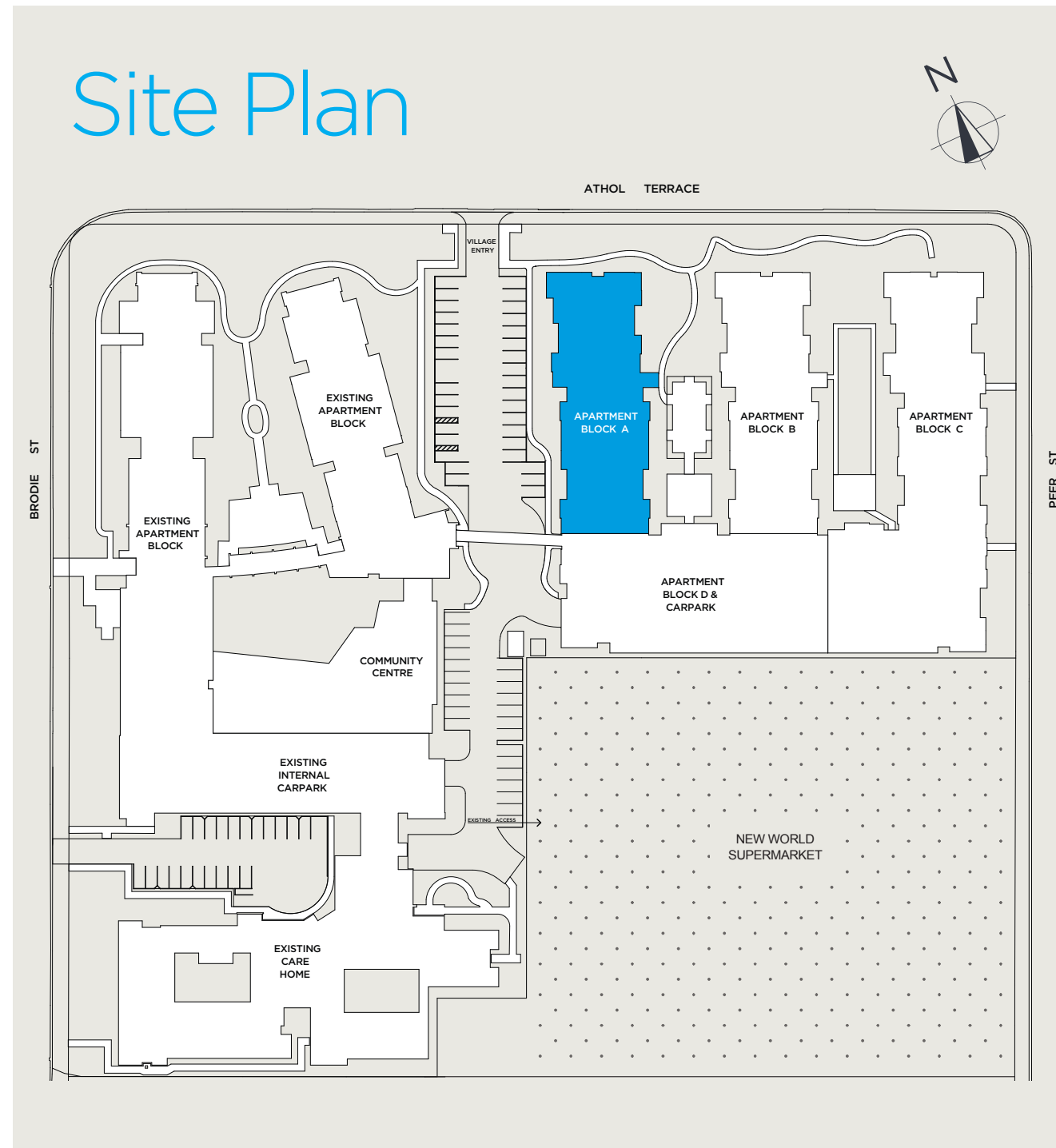
Our established village is located in the leafy area of Ilam, so you'll be joining a community of like-minded friends. Our residents enjoy our new community centre, indoor heated pool, landscaped gardens and a busy social calendar. Bupa Parkstone Care Home is also on site, should your needs change.





# Bupa Parkstone Retirement Village

**Disclaimer:** The site plan is indicative only. All efforts have been made to ensure accuracy of information at the time of print. Changes may be made during the development process and plans are subject to change without notice.



## Community Centre

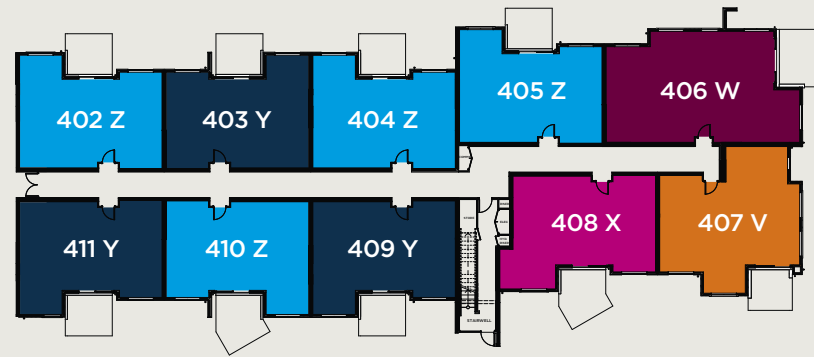
Our newly built Community Centre includes:

- Indoor heated swimming pool
- Air-conditioned gym
- Community kitchen
- BBQ and entertainment area
- Sunny courtyard
- Children's playground
- Workshop

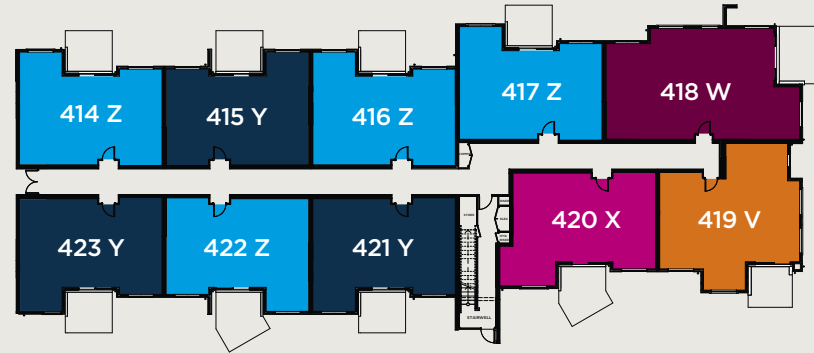




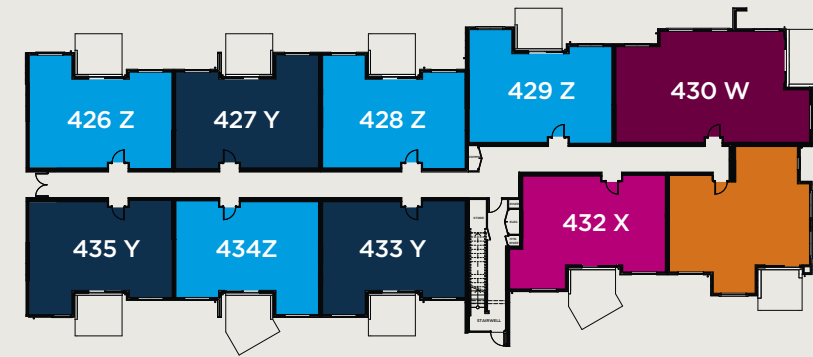
### Level One



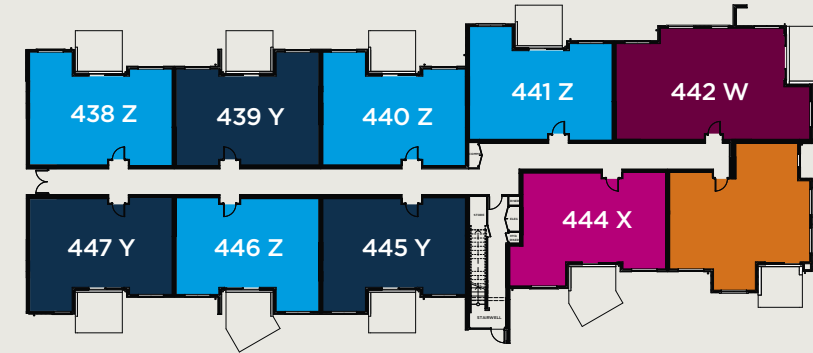
### Level Two



### Level Three



### Level Four



## Stage 2 level plans



Two bedroom apartment with a guest toilet



Two bedroom apartment with a guest toilet



Two bedroom apartment with a guest toilet and study area



Two bedroom apartment with a guest toilet



Two bedroom apartment with walk-in wardrobe, a guest toilet and study area

Apartment Type	Z	Y	X	W	V
Apartment Number	402, 404, 405, 410, 414, 416, 417, 422, 426, 428, 429, 434, 438, 440, 441, 446	403, 409, 411, 415, 421, 423, 427, 433, 435, 439, 445, 447	408, 420, 432, 444	406, 418, 430, 442	407, 419, 431, 443
One bedroom					
Two bedroom	•	•	•	•	•
Kitchen shape	Galley	Galley	Galley	U-shaped	Galley
Guest toilet	•	•	•	•	•
Study area				•	•
Walk in Wardrobe				•	

#### All apartments have the following features:

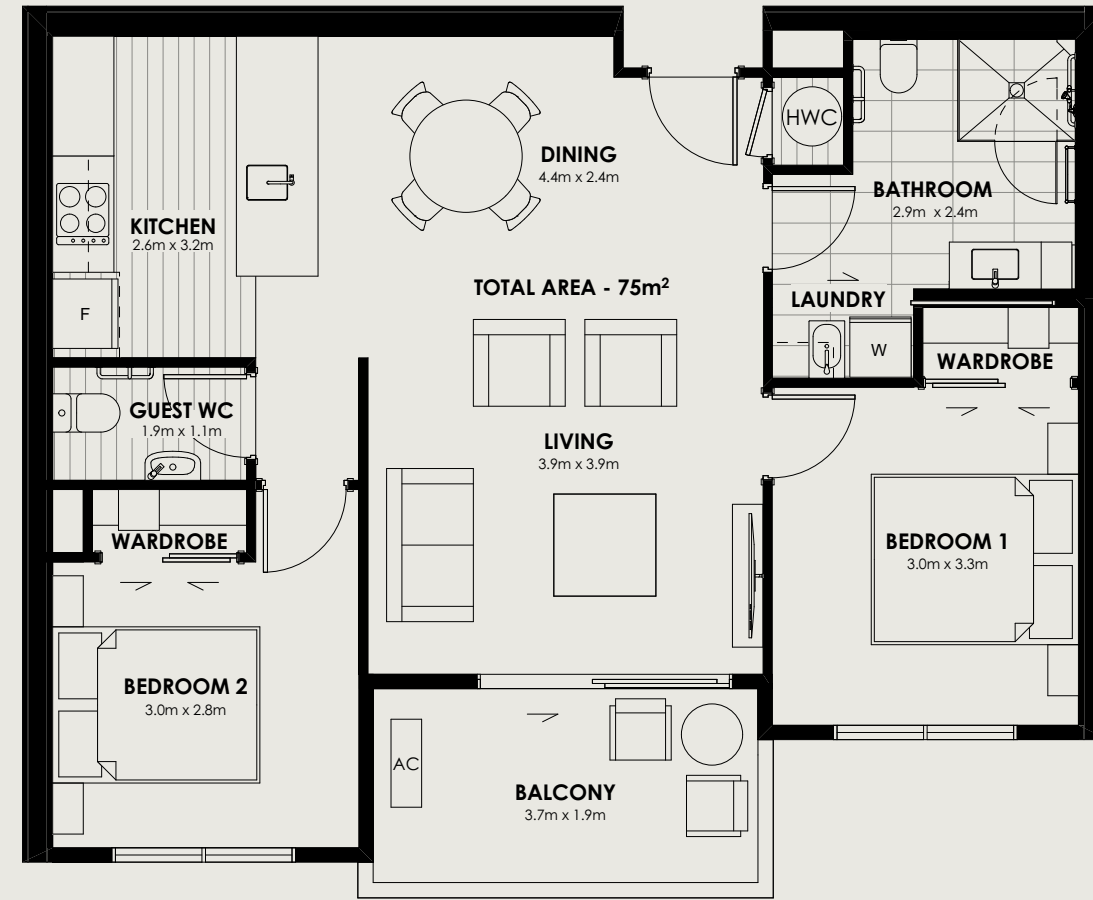
- Double glazing
- Heat pump
- Fisher & Paykel suite (hob, dish drawer, oven, washing machine and dryer)
- Laundry tub
- Heated towel rail
- Godfrey Hirst carpet
- Window coverings
- Targeting a six star Homestar built rating

## Two bedroom apartment with a guest toilet

Floor area: 75m<sup>2</sup>

Apartments: 402, 404, 405, 410, 414, 416, 417, 422, 426, 428, 429, 434, 438, 440, 441, 446

# Apartment Z



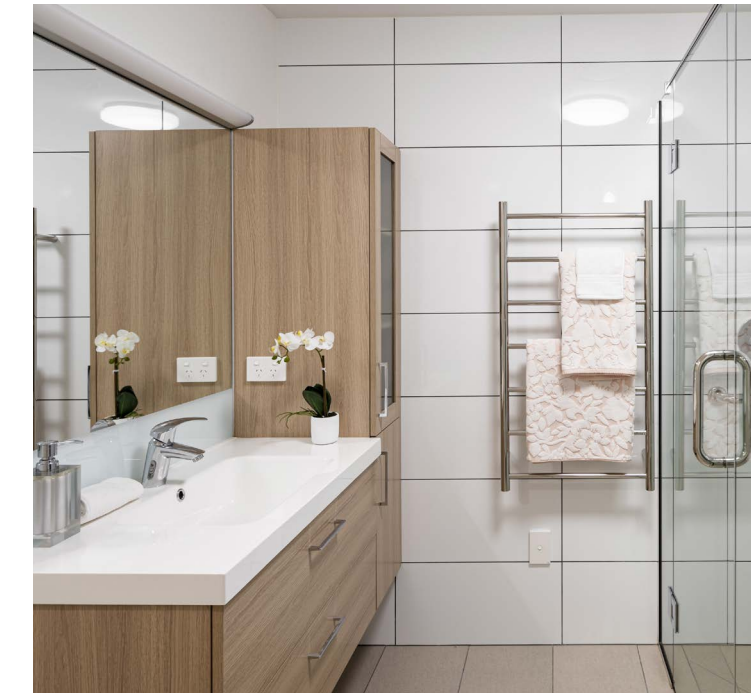
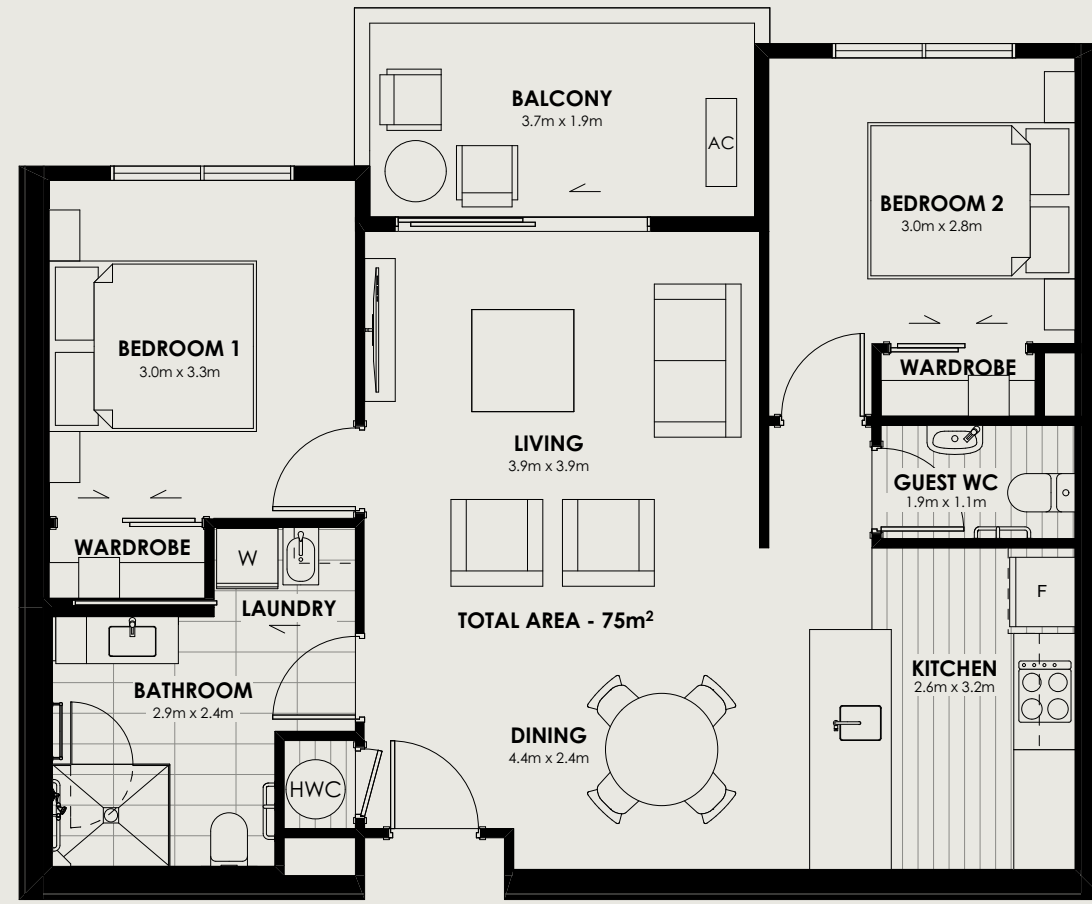


## Two bedroom apartment with a guest toilet

Floor area: 75m<sup>2</sup>

Apartments: 403,  
409, 411, 415, 421,  
423, 427, 433, 435,  
439, 445, 447

# Apartment Y

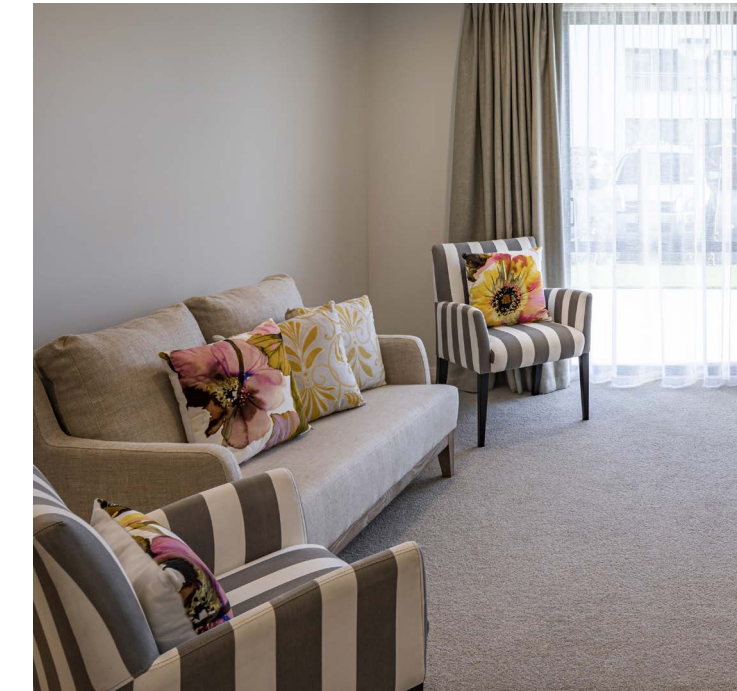
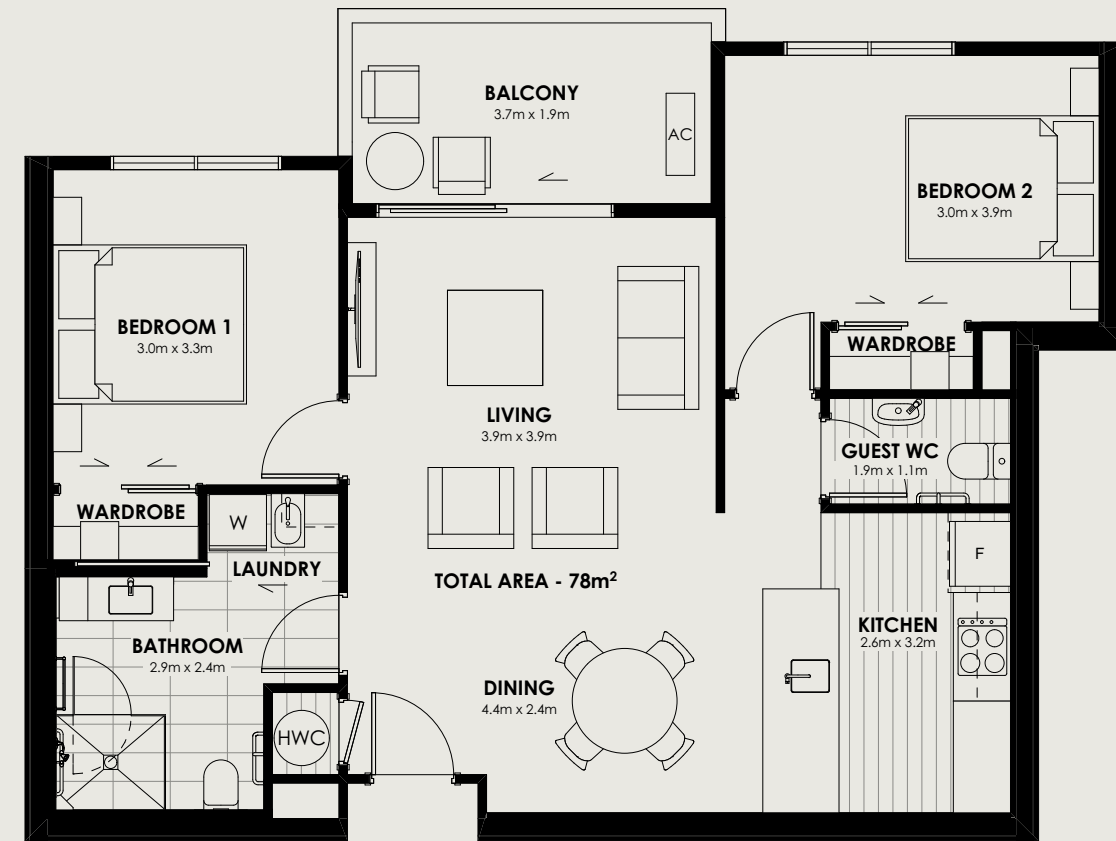




## Two bedroom apartment with a guest toilet

Floor area: 78m<sup>2</sup>  
Apartments: 408, 420, 432, 444

# Apartment X

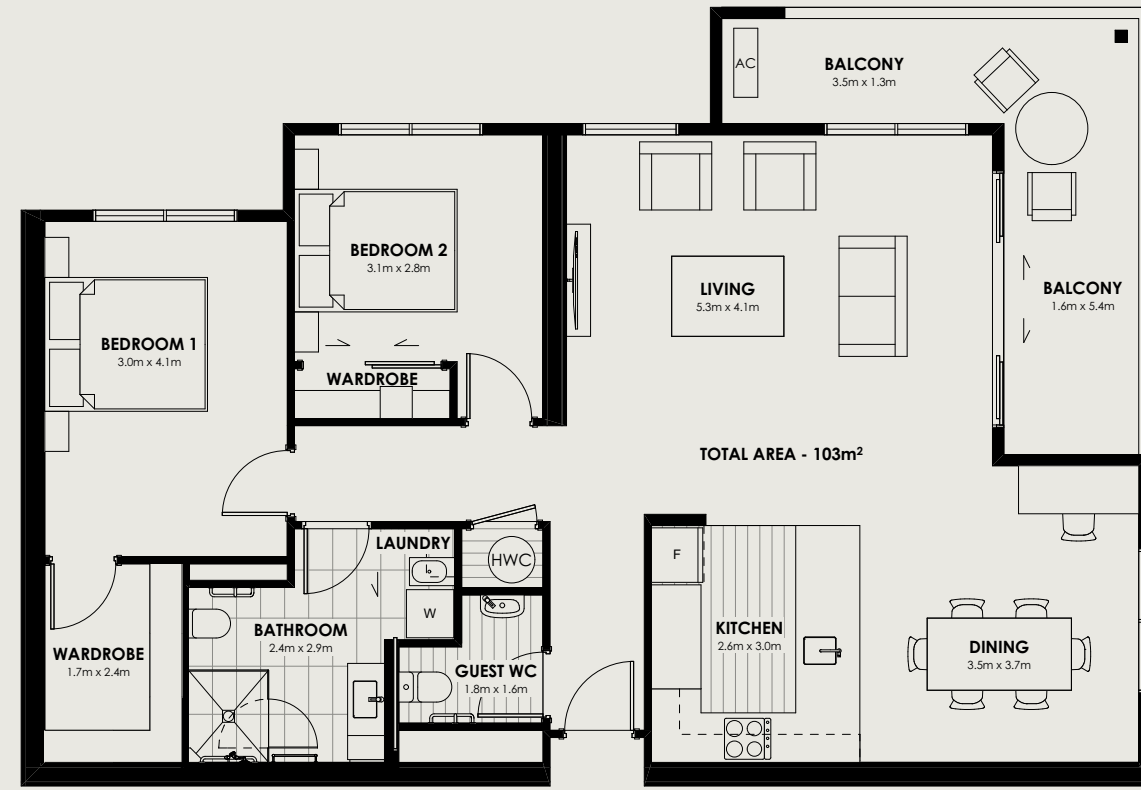




Two bedroom apartment with walk-in wardrobe, a guest toilet and study area

Floor area: 103m<sup>2</sup>  
Apartments: 406, 418, 430, 442

# Apartment W





Two bedroom  
apartment with  
a guest toilet  
and study area

Floor area: 84m<sup>2</sup>

Apartments: 407,  
419, 431, 443

# Apartment V





# Homestar means **warmer drier healthier**



## **Bupa Parkstone apartments are targeting a Homestar certified rating**

Homestar rates the health, comfort and efficiency of New Zealand homes and apartments.

A Homestar rating proves a house has been well designed and built.

It will cost less to run, be healthier to live in and better for the environment.

[www.nzgbc.org.nz/homestar](http://www.nzgbc.org.nz/homestar)



**At Bupa we are committed to building sustainable homes and communities. We want to provide our residents with warmer, healthier, and more comfortable homes that also use less water and energy, costing our residents less to live in.**

Homestar is the comprehensive, national, independent system that rates the health, comfort and efficiency of New Zealand homes, on a scale of 6-10, at both the Design and Built phase.

A six Homestar rating or higher provides assurance that a home will be warmer, healthier and cost less to run than a typical new home. Homestar ratings are assessed by qualified professionals and certified by the New Zealand Green Building Council.

## What features make your home more comfortable, efficient and healthier to live in?

- **Good levels of natural daylight**
- **Double glazed windows**
- **Higher levels of insulation**  
A well designed and high performance building envelope improves your thermal comfort, reducing the demand on energy for heating and cooling. It also reduces condensation and mould related health issues, and noise transfer between tenancies.
- **Water efficient tapware**
- **LED lighting**
- **Heat pump in living area**  
Efficient heating systems use less of our natural resources and reduce energy costs.
- **Environmental Choice certified and low VOC interior fitout items, including but not limited to: Carpet, paint and cabinetry**  
VOC's (Volatile Organic Compounds) are carbon-based chemicals that are emitted as a gas at room temperature from many liquids and solids.  
Although VOC's are very common in our indoor environments, it is better for our health to reduce the usage of products which expose us to these chemical gases.
- **Reduction in construction waste sent to landfill**  
Construction waste makes up a large percentage of landfill in New Zealand. Our contractors are accountable for significantly reducing the construction waste that is sent to landfill.





## **Bupa Parkstone Retirement Village**

2 Athol Terrace, Ilam, Christchurch

(03) 341 5700 or 021 820 280

[www.bupa.co.nz/parkstone](http://www.bupa.co.nz/parkstone)

Bupa Parkstone is part of Bupa Health & Care.

Our purpose is to help people live longer, healthier, happier lives.

**Disclaimer:** Images are indicative only. All efforts have been made to ensure accuracy of information at the time of print. Changes may be made during the development process and plans are subject to change without notice.