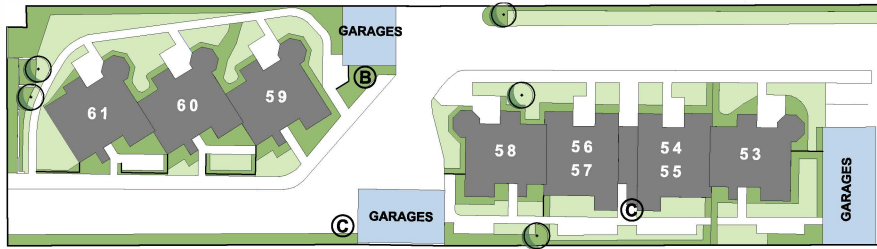


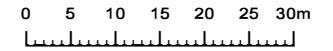
C O L O M B O S T R E E T



Villa MV47

# Maryville Courts

VILLAGE



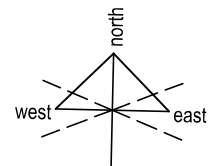
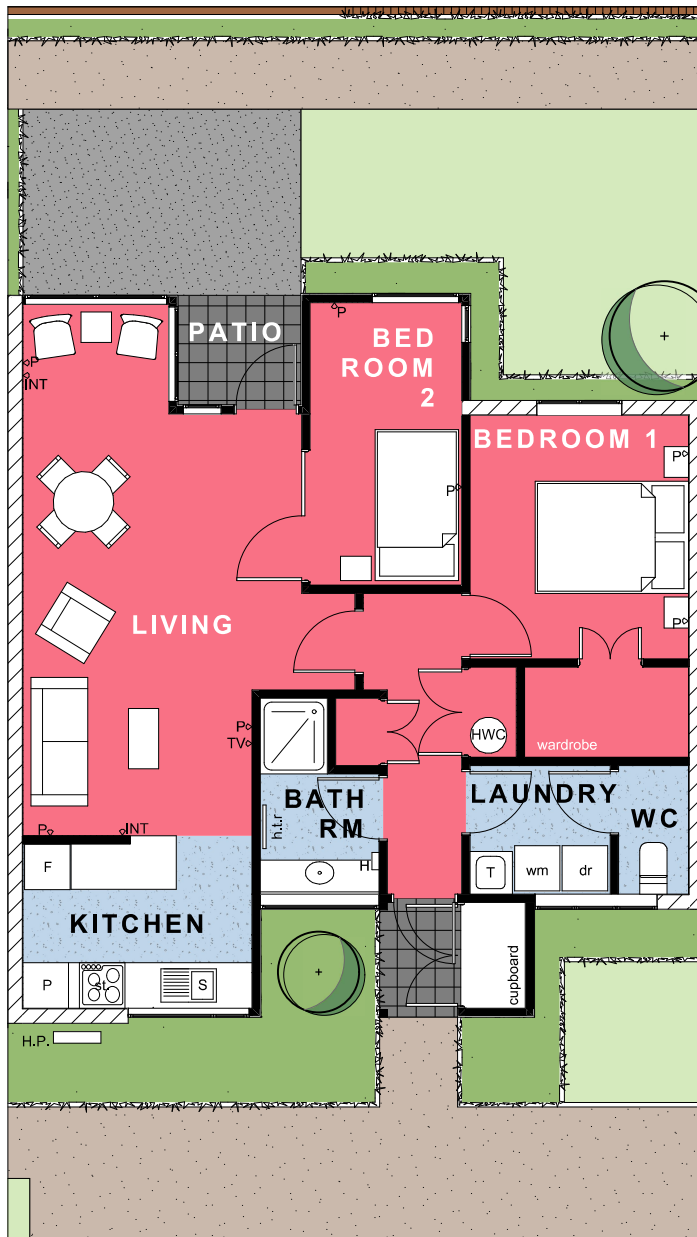
- MARYVILLE COMMUNITY CENTRE
- MARYVILLE COURTS VILLAGE
- ACCESSORY FACILITIES

- EMERGENCY CONGREGATION AREA
- LETTERBOXES
- RECYCLING/ RUBBISH BINS
- RECEPTION / OFFICE AREA

MAIN ENTRY at 155 SALISBURY STREET

S A L I S B U R Y S T R E E T

M A N C H E S T E R S T R E E T



**Villa Price \$509,900**



## VILLA 47. Double bedroom

Net Floor Area - 66m<sup>2</sup>

### ROOM LIST

LIVING/ DINING	3.7 x 5.6m
SUN NOOK	1.9 x 1.4m
KITCHEN	3.0 x 2.3m
BATHROOM	1.6 x 1.6m
LAUNDRY	3.7 x 1.7m
WC	0.9 x 1.7m
MASTER BEDROOM	2.9 x 3.2m
SECOND BEDROOM	2.0 x 3.7m

### FEATURES

- Well appointed kitchen with electric hob, oven, range hood and vinyl floor coverings
- Open plan dining and living areas, with carpet floor coverings and heatpump
- Bathroom with vanity, shower, heater, heated towel rail and vinyl floor coverings. Seperate toilet off laundry
- Main bedroom to accomodate queen bed, with large built in wardrobe. Smaller guest bedroom.
- Curtains throughout, kitchen blinds
- Patio with garden outlook and clothesline