

# Care Suites

**TYPE:**

**TYPE F**

**APPROXIMATE FLOOR AREA:**  
**43m<sup>2</sup>**

**BALCONY TYPE:**  
**Juliet Balcony**

**INFORMATION:**

This caresuite drawing has been produced prior to the completion of construction and indicative only. APT reserves the right to change or alter the building for construction or statutory authority requirements. Furniture shown for illustrative purposes only and is not included with the apartments.



# Care Suites

**TYPE:**

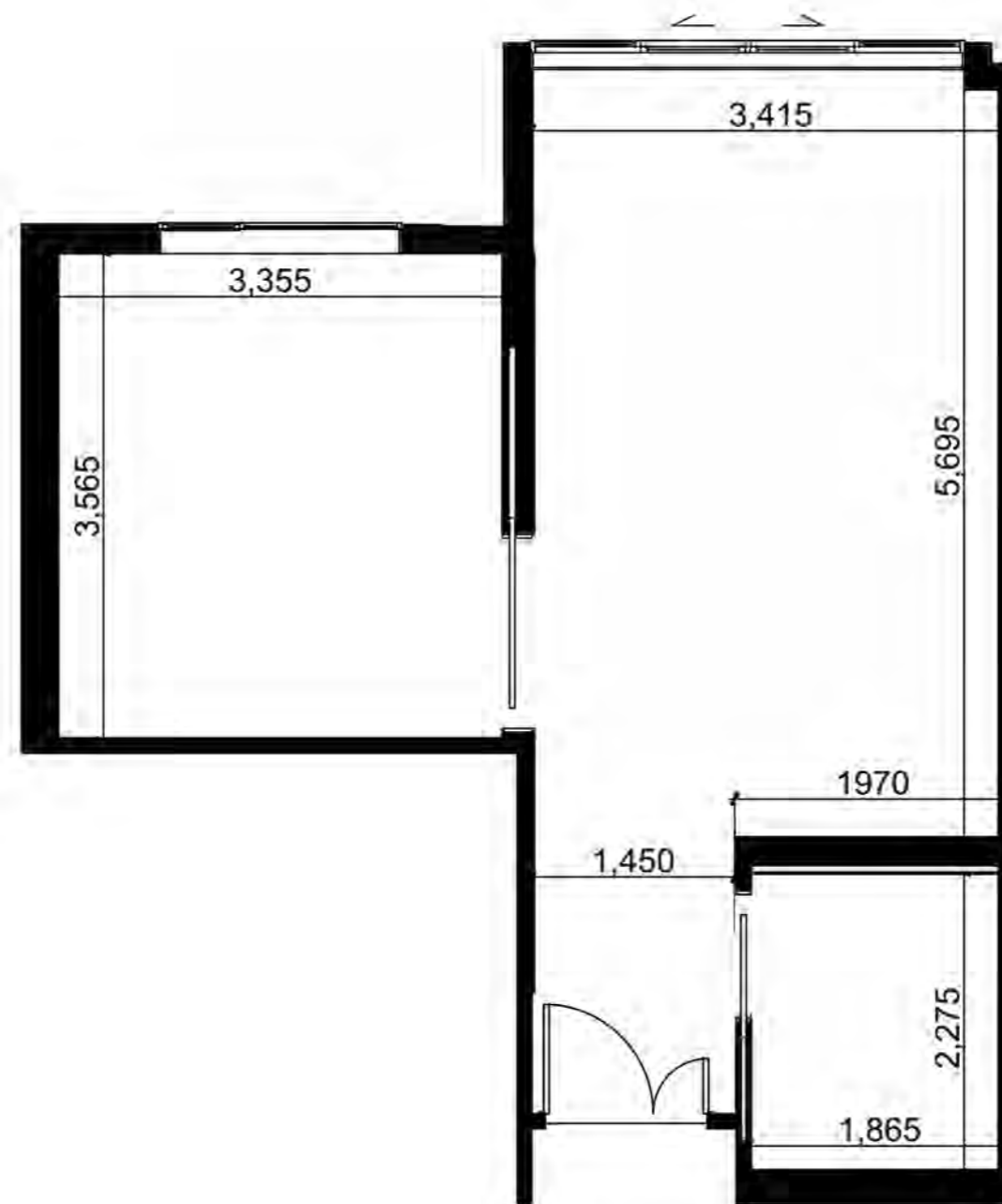
**TYPE F**

**APPROXIMATE FLOOR AREA:**  
**43m<sup>2</sup>**

**BALCONY TYPE:**  
**Juliet Balcony**

**INFORMATION:**

This caresuite drawing has been produced prior to the completion of construction and indicative only. APT reserves the right to change or alter the building for construction or statutory authority requirements. Furniture shown for illustrative purposes only and is not included with the apartments.



# Care Suites

**TYPE:**

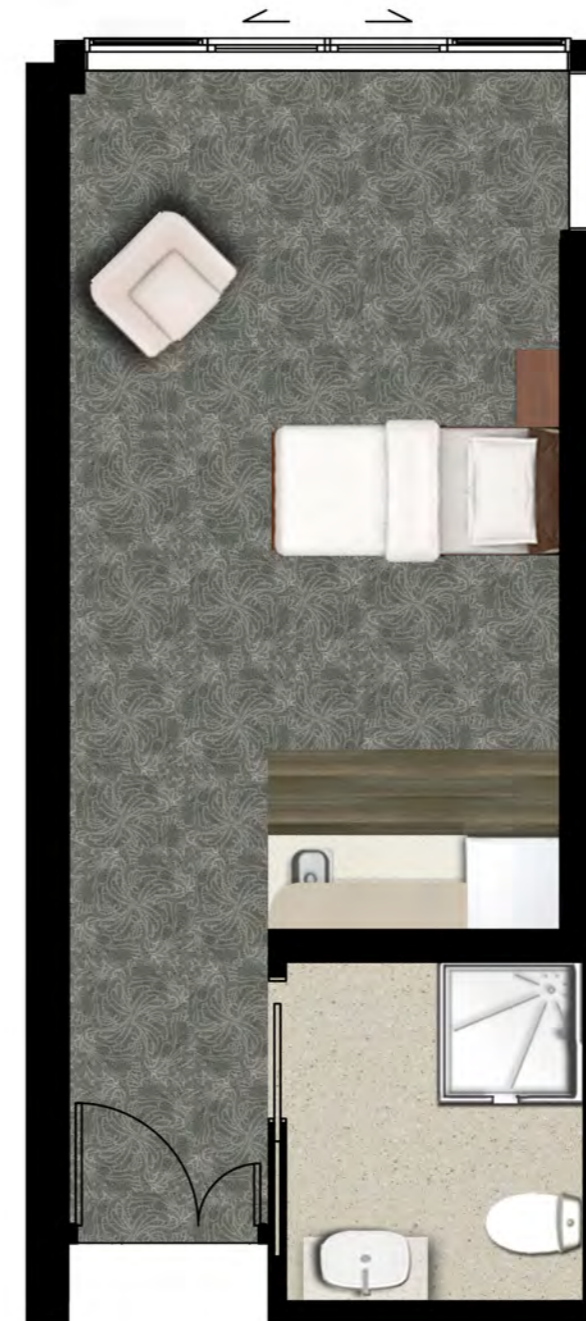
**TYPE G**

**APPROXIMATE FLOOR AREA:**  
**29m<sup>2</sup>**

**BALCONY TYPE:**  
**Juliet Balcony**

**INFORMATION:**

This caresuite drawing has been produced prior to the completion of construction and indicative only. APT reserves the right to change or alter the building for construction or statutory authority requirements. Furniture shown for illustrative purposes only and is not included with the apartments.



# Care Suites

**TYPE:**

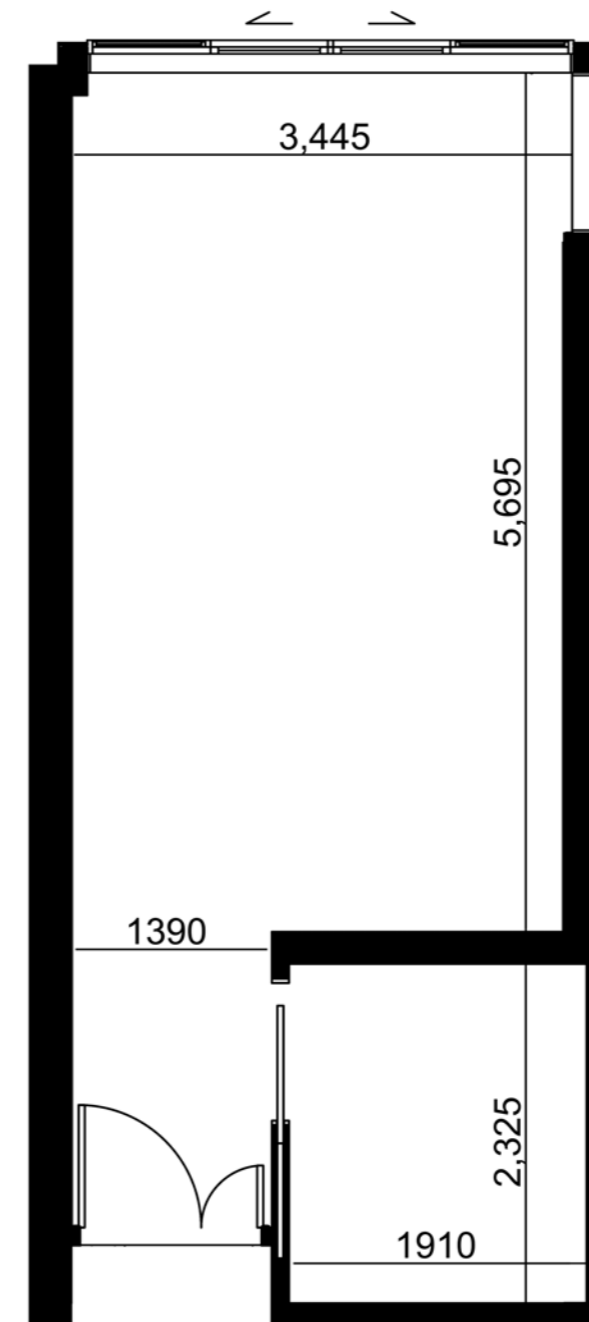
**TYPE G**

**APPROXIMATE FLOOR AREA:**  
**29m<sup>2</sup>**

**BALCONY TYPE:**  
**Juliet Balcony**

**INFORMATION:**

This caresuite drawing has been produced prior to the completion of construction and indicative only. APT reserves the right to change or alter the building for construction or statutory authority requirements. Furniture shown for illustrative purposes only and is not included with the apartments.



# Care Suites

**TYPE:**

**TYPE K**

**APPROXIMATE FLOOR AREA:**  
**36m<sup>2</sup> Floor Area + 10m<sup>2</sup> Balcony**

**BALCONY TYPE:**  
**Open Balcony**



**INFORMATION:**

This caresuite drawing has been produced prior to the completion of construction and indicative only. APT reserves the right to change or alter the building for construction or statutory authority requirements. Furniture shown for illustrative purposes only and is not included with the apartments.

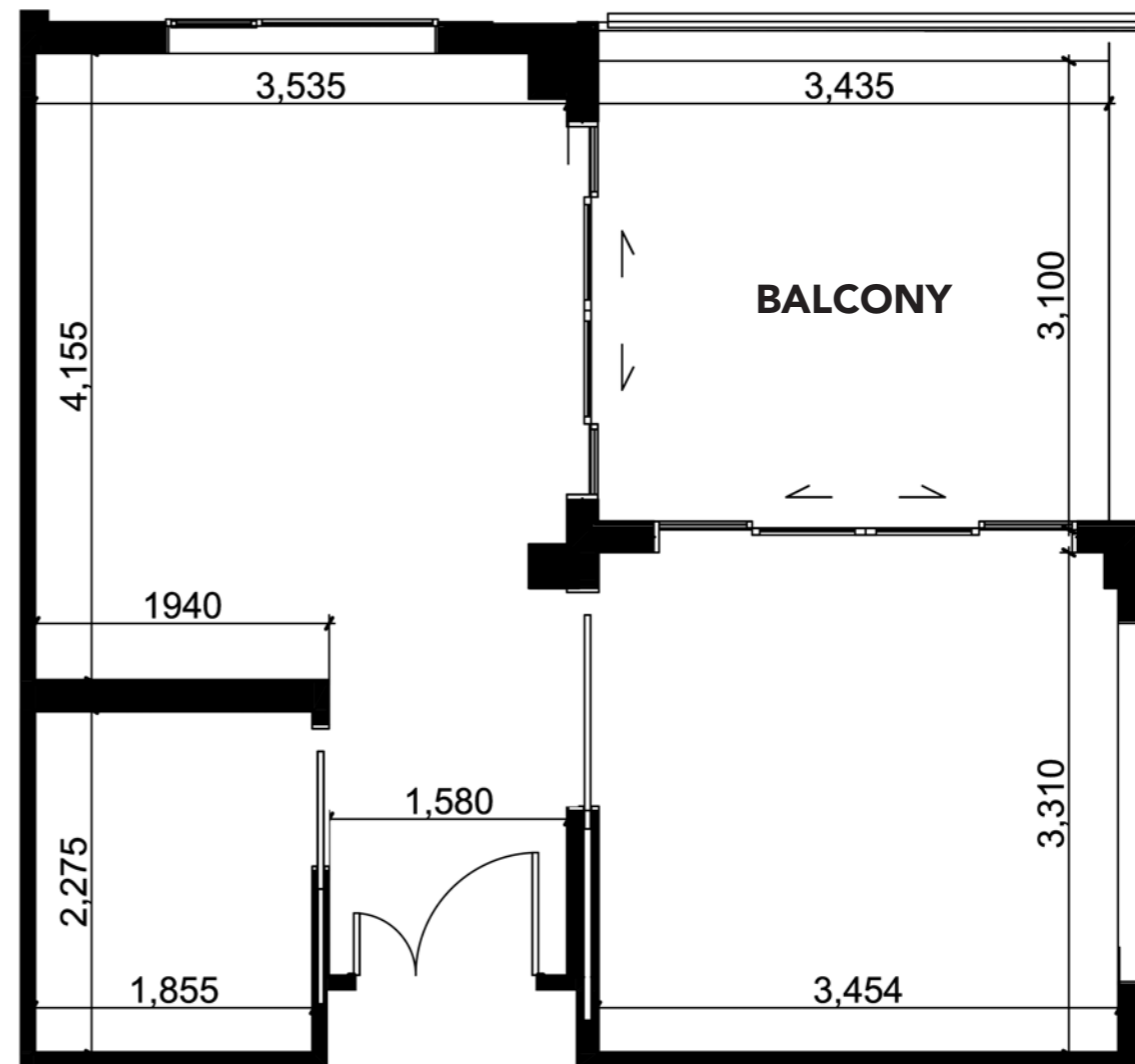
# Care Suites

**TYPE:**

**TYPE K**

**APPROXIMATE FLOOR AREA:**  
**36m<sup>2</sup> Floor Area + 10m<sup>2</sup> Balcony**

**BALCONY TYPE:**  
**Open Balcony**



**INFORMATION:**

This caresuite drawing has been produced prior to the completion of construction and indicative only. APT reserves the right to change or alter the building for construction or statutory authority requirements. Furniture shown for illustrative purposes only and is not included with the apartments.