

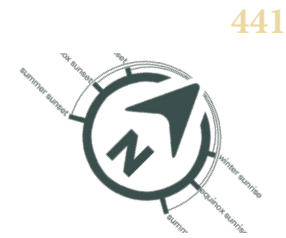
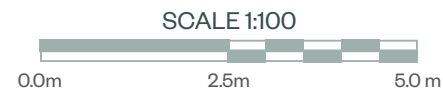
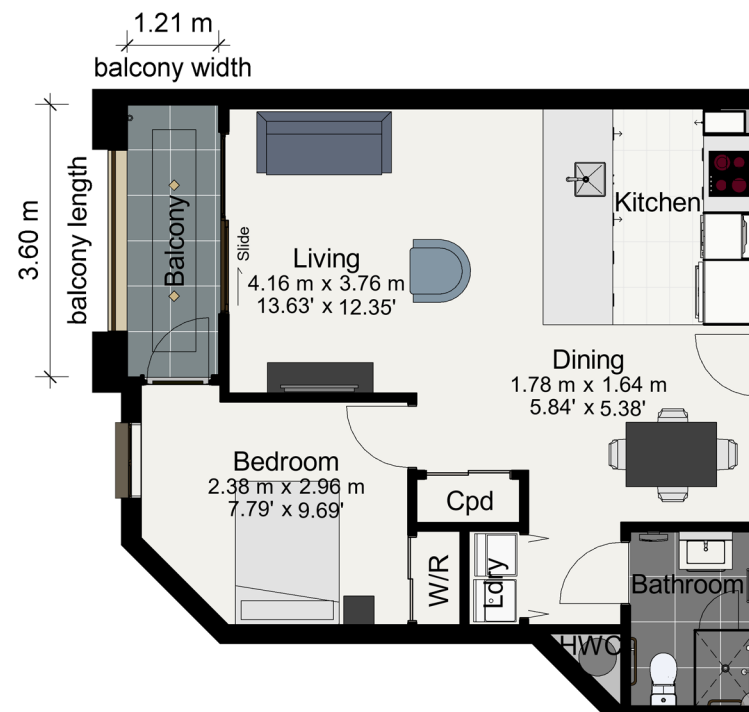


RYMAN HEALTHCARE
EDUMUND HILLARY
RETIREMENT VILLAGE

STAGE 10
INDEPENDENT
APARTMENT

441
1BDRM/1BATH
LEVEL 5

INTERIOR	620.11FT ²	57.61M ²
BALCONY(S)	50.66FT ²	4.71M ²
TOTAL	670.77FT ²	62.32M ²



UNIT SPECIFICATIONS

- Fixed floor coverings (tiles and carpet)
- Light fittings
- Drapes
- Double glazed windows
- Telephone points (in living and all bedrooms)
- Split system, heating and cooling in living room & master & heater in bathroom(s)
- Corian benchtop and glass splashback
- Cook top, oven and rangehood (Fisher & Paykel - Stainless steel finish)
- Single draw dishdrawer (Fisher & Paykel - Stainless steel finish)
- Bathroom vanity and mirrored cabinet
- Heated towel rail
- Under tile heating in bathroom(s)
- Laundry tub
- Fire alarm, smoke detectors and sprinklers
- Emergency call alarm system in master bedroom and bathroom(s)
- TV compatible aerial point(s) in lounge and bedrooms
- Tiled balcony(s) or patio(s)

