



ARVIDA
Olive Tree

An Arvida Living Well Community

Welcome to Olive Tree, an Arvida Living Well Community close to the heart of Palmerston North.

We challenge ourselves to make our customers' lives better with everything we do.

Every individual plays a part at Olive Tree

We know everyone, whether resident or staff, on a first name basis at Olive Tree. We strive to enhance the quality of life for every individual member of our community by providing a friendly, safe and supportive environment.

Olive Tree sits on a property of approximately 12 acres in the north-west suburbs of Palmerston North city. Every day offers a chance to participate in a diverse range of activities, sharing good times and memories with newly-made friends. Around the beautifully landscaped grounds you'll find lovely villas and serviced apartments. You'll also have peace of mind knowing we have rest home care, hospital-level care and dementia support, should you ever need it.

Our people at Olive Tree love their jobs and what they do

Our gardeners are passionate about maintaining our wonderful garden paradise and bowling green for everyone to enjoy. Our residents and staff love to organise gatherings to get people together – whether in the garden or at our many social activities. We love our jobs here and we naturally form strong bonds with all of our residents. We know that you'll feel at home here at Olive Tree.

Be a part of a community that values you

As an Arvida community, we take care and time to listen, and we'll help you to continue to enjoy the things that you love to do. We'll encourage participation and engagement in our small community and we'll help you to remain active and happy.

Imagine your retirement like this, doing what you love to do

At Olive Tree an enjoyable, enriched retirement experience awaits you. Our friendly and welcoming community offers the perfect environment for those looking for a little more companionship and support. The facilities and activities within the community are available for everyone to enjoy and you will be encouraged to join in and participate as much as you like while still enjoying your privacy.

We have lawn bowls, a billiard table, exercise programmes, movie afternoons, happy hours, spa pool, unisex hairdresser, music therapy, craft sessions, exercise classes, church programmes, weekly shopping trips and more.

Our social calendar is very popular and family and friends are always welcome to join us.





We're well known for our personal care

Olive Tree is well known in the wider Palmerston North community for offering a full continuum of care for its residents.

You can access care services while living independently in your own apartment. We can assist with meals, laundry, cleaning, access to doctors and nurses and 24 hour emergency assistance. We also provide the ability to transfer from an apartment to our rest home should it be required in the future.

We provide a range of options and we can look after your current requirements, and adapt to changes in your health or personal circumstances, should they occur.

Ask us about how we can tailor our care plans for you.

Rest home and our care plan options:

Our care package fees have been designed so we can provide the best value care for you. We have several care packages to choose from, including basic entry level through to full rest home level care. Please ask us for a full list of costs and inclusions.

Our professional staff offer real peace of mind

Olive Tree's Manager is supported by our qualified and professional care staff who all participate in our diverse education programmes. So rest assured, you're in safe hands at Olive Tree.

Flexible care plans

We are able to look after your current needs and can also provide more care and assistance should your personal circumstances change. This gives you, your partner and family the comfort of knowing you'll always have the support and care you need, when you need it.

Dementia care

Our dementia unit (some rooms have ensembles) offers the very best of care and personal attention in a friendly, family focused environment.

Rooms are light and airy, with views over lovely gardens and delicious meals are prepared daily in our kitchen.



The accommodation at Olive Tree

Independent villas

Olive Tree villas are spacious homes with open plan layouts, and feature lovely kitchens and bathrooms. In your new villa you can enjoy independent living in a well-appointed single or two level home, surrounded by friendly neighbours and beautiful tranquil gardens. We can provide support for you in the future if you need a little further assistance with day to day living, and you will have the comfort of knowing there is also full medical assistance available through a monitored emergency call system in your villa.

Serviced apartments

Olive Tree serviced apartments are sunny, modern and warm and combine private and independent living with extra assistance if it's needed. These services may include the provision of meals, a personal laundry service, regular housekeeping by our friendly staff, help with medications and more.

Rest home and hospital rooms

Olive Tree's rest home is situated in the heart of the community and offers rooms with ensuites, all providing full 24 hour care.

The atmosphere is warm and vibrant, with views of the gardens that can be enjoyed from many of the rooms.

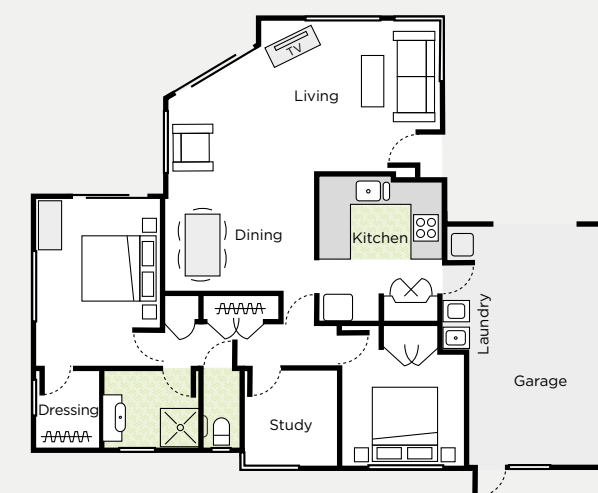
Our dementia care

We also have a secure dementia care household staffed by carefully selected and qualified wellness partners.

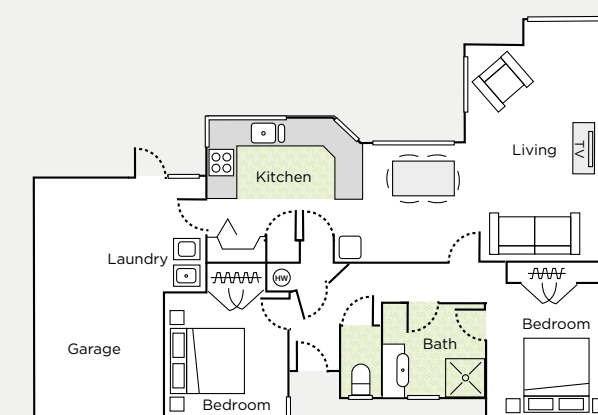
Friends and family are very welcome to visit and participate with our activities and outings. We love to see everyone involved and engaged with what's going on and to be part of things.

We are always looking for ways to help our residents living with dementia to be as involved, comfortable, and happy as possible.

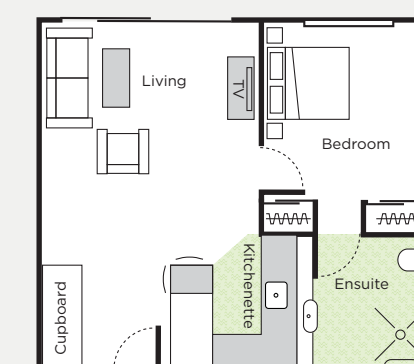
Our dementia care specialists and carers are hand chosen for their empathy, skill and temperament for this specialist profession.



Typical two-bedroom villa with study



Typical two-bedroom villa



Typical one-bedroom serviced apartment



Our commitment to you

Olive Tree is an Arvida community so we all enjoy the down to earth values that drive everything we do. We're always looking for new ways to make life in our community as fun and enjoyable as possible.

We're a family of friends in a supportive and caring community. The most important things in life to us are the people we live together with every day.

It's a wonderful retirement lifestyle at Olive Tree

At Olive Tree, we help to provide days of fun that are full and rich. Every resident is encouraged to enjoy the in-house activities on offer, or take part in our many excursions and shopping trips around Palmerston North.

There is always so much to do here at Olive Tree. Whether it is reading a book in a quiet nook in the garden, playing a few ends of bowls with friendly rivals, or catching up

with a neighbourhood mate for a yarn, the choice is yours.

Tapping into the social calendar is a great way to make new friends, or you can invite family and friends from outside the community to come along for a visit. Our motto is always the same at Olive Tree: The more the merrier!

The best decision I've made...

We moved to Olive Tree in early 2014. My wife had Alzheimer's and I wanted to get her settled into a village before it advanced. After looking at several villages we brought a villa at Olive Tree. The lovely established grounds and the friendliness of the residents sold it to us.

My wife unfortunately is now in the dementia unit at Olive Tree. It's lovely that I can walk across and see her at any time.

I consider that this move to Olive Tree is the best decision I have made. There are plenty of social activities on offer, a spacious community/meeting centre, a well stocked library, a snooker room with a full sized table and a large indoor heated pool. Other activities like bowls, badminton, croquet and cards are all great social activities.

Olive Tree residents

A few of the common questions...

Why do people love living at Olive Tree?

We listen to our residents and what we consistently hear is:

- Olive Tree villas offer privacy, space and individuality
- Our staff are friendly and professional.
- Our rooms and facilities are lovely and warm
- The gardens are beautiful and colourful.

What levels of care are there?

Our community offers a continuum of care, that ranges from fully independent living through to rest home, hospital and dementia care which means you'll have real peace of mind. We can tailor a package of support just to suit your needs.

Can I move into the care facilities of the community later on?

If you need care or extra support at any point, you'll have priority access to an available Arvida care centre - either at Olive Tree, or at another Arvida community.

Who pays for maintenance?

Arvida will cover repairs and maintenance to the interior of your home and chattels provided - unless the damage is above fair wear and tear. We'll also look after maintenance and repair of the exterior of your home. Upgrades and refurbishment can be done while you're living in your villa or apartment, but will be at your cost.

Can my family and friends stay with me in my home?

Yes of course, you can have family and friends come to stay for holidays. There is parking available for visitors within the community.

Can I have my pets with me?

Yes, we know that pets are important and are often a much loved part of the family. Our manager will need to confirm that your pet is suitable for Olive Tree.

Is there space for my car?

Some of our serviced apartments have parking provided also - please ask our team for more info. Villas all come with an internal access garage.

Is there security at night?

Olive Tree is fully fenced with security tag access after hours. Our staff are also on site 24 hours a day, should you need them. The emergency call system throughout the community gives added peace of mind.

What costs am I responsible for?

In addition to the Deferred Management Fee, you will be responsible for:

- Your telephone bill
- Your contents insurance
- Your car insurance
- Your power bill (villa only)



There is also a weekly village fee which in the case of serviced apartments includes power. There will also be costs for any extra services should you require them. e.g. laundry and house cleaning. See our serviced apartment brochure for details and current prices.

Can I arrange for any other fittings to be added to my home?

At Olive Tree, we do everything we can to ensure you have your home the way you want it. You can choose to add items to make life a little easier like additional heating, a security door or fly screens. We can help you with these extras but they will be at your cost.

What happens when I leave?

We do our best to support you and your family in every way we can. The village fees stop immediately after you leave, and we begin the marketing and sale of your ORA.

Who is our Village Manager?

Robyn Ballard has over 15 years of experience in retirement villages and is passionate about all that Olive Tree has to offer.



Robyn Ballard



Welcome to Olive Tree

If you're looking for a retirement community where you can continue to enjoy life to the full, and where people respect and look after each other, we'd love the opportunity to show you around.

Why not give us a call and experience Olive Tree for yourself?

11-13 Dalwood Grove,
Palmerston North 4412

Phone 0800 278 432
or 06 350 3000 or email
info@olivetreeretirement.co.nz

olivetreeretirement.co.nz



ARVIDA
Olive Tree

An Arvida Living Well Community